



**2022
Marked
As
Historic
Year**

**ERIE WATER WORKS
PRESENTS
30 FOR 30**

**30 Year
Anniversary
—
\$30 Million
Invested**



In 2022, Erie Water Works (EWW) celebrated 30 years as a municipal authority and a record setting \$30M invested in capital improvements to the water system!

WATER STORAGE PROJECTS

Cherry Street Reservoir Improvements

The 5 million gallon (MG) Cherry Street Reservoir #1 was built in 1921. The 100+ year old facility received a \$1,200,000 facelift that included concrete crack injection and repairs, interior pipe restoration, replacement of corroded ladders, roof access hatches and vents. The 5 MG Reservoir #2 was constructed in 1937. Similar repairs were made at a cost of \$1,065,000. In addition, disinfection byproduct (*known as TTHMs*) removal systems were installed to ensure water quality continues to exceed U.S. Environmental Protection Agency (EPA) regulations. The work completed will extend asset service life and improve safety and operational reliability.

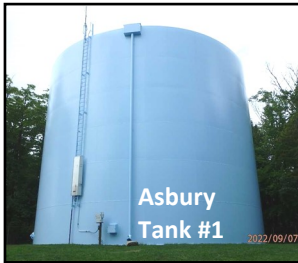


Pipe Rehab



Reservoir Interior

Asbury Tank #1 Interior & Exterior Renovations



Asbury Tank #1

EWW must periodically renew tank coatings to prevent corrosion of the steel underneath. Keeping tanks in a reliable operational state is critical to our business. Asbury Tank #1, located near West 38th Street along Asbury Road, provides stored water to western Millcreek. The tank has a capacity of 1,000,000 gallons and was constructed in 1973. The interior and exterior were recoated in 2022. New aeration, mechanical mixing and ventilation systems were installed to promote uniform water quality and control disinfection byproducts. Asbury Tank #2 will have similar work completed in 2023.

Since 1994, EWW has invested over \$316,000,000 into the public water system

PUMPING STATION PROJECTS

Cherry Street Pump Station Improvements

This important facility provides water to over 41,000 people in portions of the City of Erie, Millcreek, Harborcreek, Wesleyville, and Summit. There are eight new pumps that provide water to three separate and distinct pressure districts. The total pumping capacity is over 25 million gallons per day!

A new sodium hypochlorite disinfection system was added to maintain appropriate chlorine residuals at all points within the water distribution system. This helps EWW ensure U.S. EPA water quality regulations are met. Three 500 kilowatt generators were installed to provide backup for the electric utility power supply. This helps EWW to meet its mission to provide a continuous supply of quality water. This capital investment totaled \$11,000,000.



6 New Pumps



3 New Emergency Generators

“World-Class Water, First-Class Service”



**2022
Marked
As
Historic
Year**

**ERIE WATER WORKS
PRESENTS
30 FOR 30**

**30 Year
Anniversary
—
\$30 Million
Invested**



In 2022, Erie Water Works celebrated 30 years as a municipal authority and a record setting \$30M invested in capital improvements to the water system!

PUMPING STATION PROJECTS

Depot Road Pump Station Improvements

This pumping facility provides water to the Depot Road area south of Harborcreek Senior High School. It was constructed in 1995 as part of the development of the I-90 and Depot Road area. After 27 years of continuous operation, the replacement of electrical equipment and controls, the addition of one 500 gallon per minute (gpm) pump, and other mechanical improvements were in order. The value of the project was just under \$600,000.



WATER TREATMENT PROJECTS

Richard S. Wasielewski Water Treatment Plant (RSW WTP) Fluoride Building Improvements

The fluoride facility at the RSW WTP was originally constructed in 2002. The full renovation included replacement of chemical tanks, pumps, instrumentation, heating, ventilation, doors, electrical, and plumbing systems. Community water fluoridation has been recognized for more than 75 years as a safe and effective public health intervention to prevent tooth decay. Project expenses totaled \$550,000.



EWW has averaged almost \$11M in capital investment annually since 1994

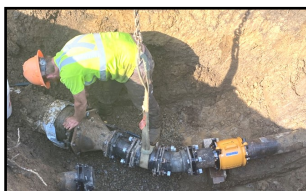
TRANSMISSION & DISTRIBUTION PROJECTS

Chestnut Street 20-inch Water Main Lining (Repair)

In February 2022, it was reported that the 1924 vintage 20-inch cast iron water main along Chestnut Street (near where West 15th Street would be) began to leak directly adjacent to the CSX Railroad Tracks. The water main is a critical link between the Chestnut WTP and the 34-MG Sigsbee Reservoir. Emergency repair options were quickly analyzed and executed. The solution selected was to install a Class IV, fully-structural “pipe within a pipe”. This mostly trenchless technology is known as Cured-In-Place Pipe and installation is illustrated above.



Amherst, Lancaster & Aberdeen Water Main Replacement



Over 5,500 feet of new 8-inch diameter ductile iron water main was installed to replace failing cast iron pipe. Work included the replacement of 3 fire hydrants and the installation of 3 new fire hydrants. Fifteen system isolation valves were installed and over 115 customer service connections were replaced as part of the work. The project expenses were just over \$1,000,000. As always, safety was a top priority!

Check out our newly revamped website at www.eriewater.org