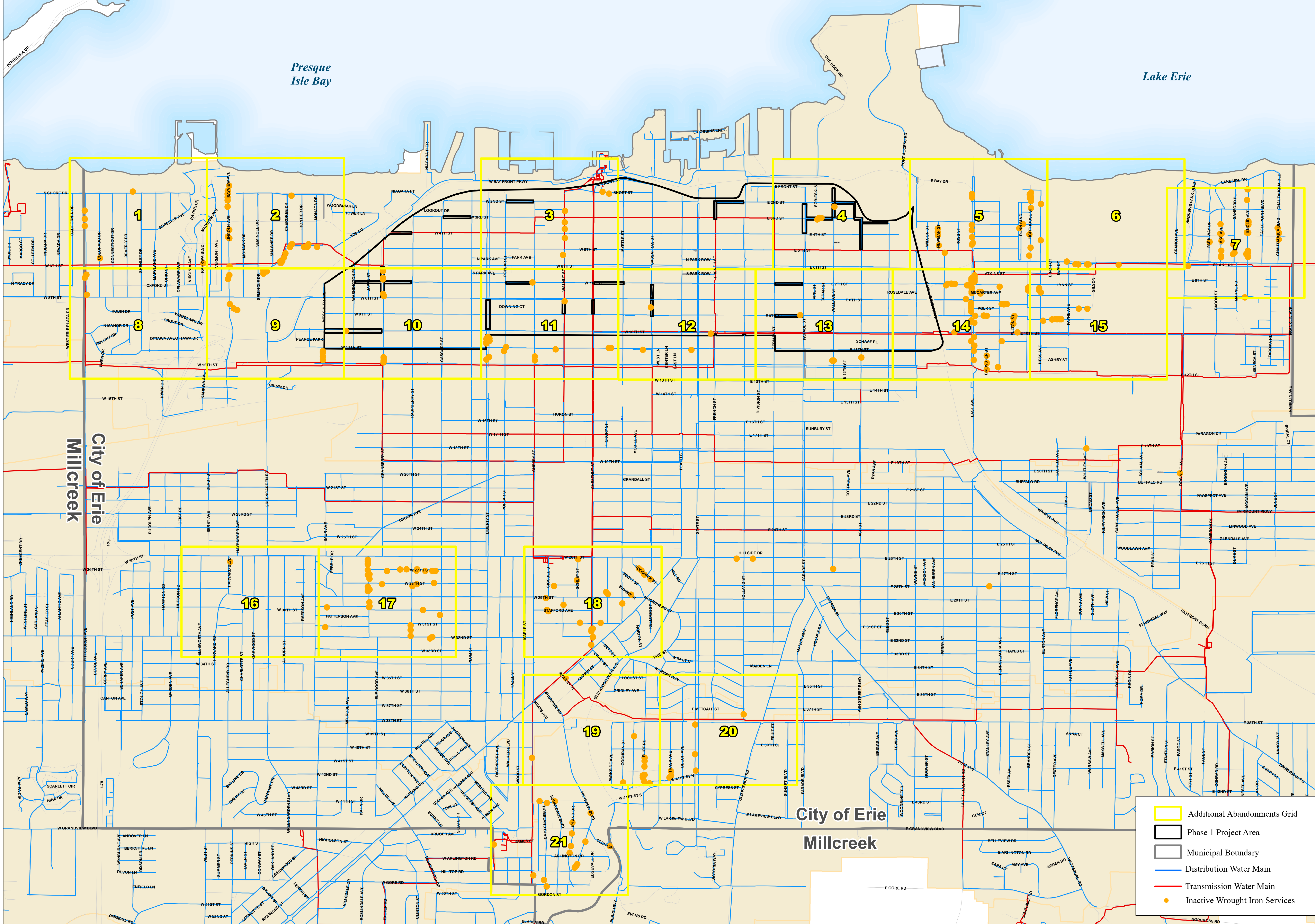


Additional Abandonments

2021-03



- Additional Abandonments Grid
- Phase I Project Area
- Municipal Boundary
- Distribution Water Main
- Transmission Water Main
- Inactive Wrought Iron Services

ERIE WATER WORKS

Printing Date: Dec 20, 2020
File: 2021-03-03 Millcreek Grids
Project: 2021-03-03 Millcreek Grids

0 250 500 1,000 1,500 Feet

2021-03

- Inactive Wrought Iron Services
- Domestic Curb Valve
- Fireline Curb Valve
- Combined Curb Valve
- Inactive Curb Valve
- Hydrant with Branch Valve
- Hydrant no Branch Valve
- Open Gate Valve
- Closed Gate Valve
- Open Butterfly Valve
- Closed Butterfly Valve
- Hydrant Valve
- Fitting
- Cross
- Tee
- Inverter/Reducer
- Corporation Stop
- Smith Tap
- Water Quality Device
- Critical Customer
- Project Area Grid
- Domestic Service Line
- Fire Service Line
- Combined Service Line
- Inactive Service Line
- Hydrant Branch
- Distribution Main
- Transmission Main
- Water Main Casing
- Political Boundary
- Building Footprint
- Right of Way
- Edge of Pavement

0 50 100 200 300
Feet
1 inch = 200 feet

Printing Date: June 28th, 2023
File: Engineering/CIP Projects/6- Capital
Projects 2017-2021-03 PENNVEST
WIFA Lead Line Replacement Project
Maps, GIS data, & Construction Estimate



1

Contract: Locations and total numbers of active and inactive services shown on this map are approximate. Final locations and numbers shall be confirmed by the Contractor and determined in the field using the EWW provided iPad which will depict the specific locations and associated information developed from EWW's Geographic Information System (GIS) and Asset Management System.

2021-03

- Inactive Wrought Iron Services
- Domestic Curb Valve
- Fireline Curb Valve
- Combined Curb Valve
- Inactive Curb Valve
- Hydrant with Branch Valve
- Hydrant no Branch Valve
- Open Gate Valve
- Closed Gate Valve
- Open Butterfly Valve
- Closed Butterfly Valve
- Hydrant Valve
- Fitting
- Cross
- Tee
- Inverter/Reducer
- Corporation Stop
- Smith Tap
- Water Quality Device
- Critical Customer
- Project Area Grid
- Domestic Service Line
- Fire Service Line
- Combined Service Line
- Inactive Service Line
- Hydrant Branch
- Distribution Main
- Transmission Main
- Water Main Casing
- Political Boundary
- Building Footprint
- Right of Way
- Edge of Pavement

0 50 100 200 300
Feet
1 inch = 200 feet

Printing Date: June 28th, 2023
File: Engineering/CIP Projects/6- Capital
Projects 2017-2021-03 PENNVEST
WIFA Lead Line Replacement Project
Maps, GIS data, & Construction Estimate



2021-03A
2

Contract: Locations and total numbers of active and inactive services shown on this map are approximate. Final locations and numbers shall be confirmed by the Contractor and determined in the field using the EWW provided iPad which will depict the specific locations and associated information developed from EWW's Geographic Information System (GIS) and Asset Management System.

2021-03

- Inactive Wrought Iron Services
- Domestic Curb Valve
- Fireline Curb Valve
- Combined Curb Valve
- Inactive Curb Valve
- Hydrant with Branch Valve
- Hydrant no Branch Valve
- Open Gate Valve
- Closed Gate Valve
- Open Butterfly Valve
- Closed Butterfly Valve
- Hydrant Valve
- Fitting
- Cross
- Tee
- Inverter/Reducer
- Corporation Stop
- Smith Tap
- Water Quality Device
- Critical Customer
- Project Area Grid
- Domestic Service Line
- Fire Service Line
- Combined Service Line
- Inactive Service Line
- Hydrant Branch
- Distribution Main
- Transmission Main
- Water Main Casing
- Political Boundary
- Building Footprint
- Right of Way
- Edge of Pavement

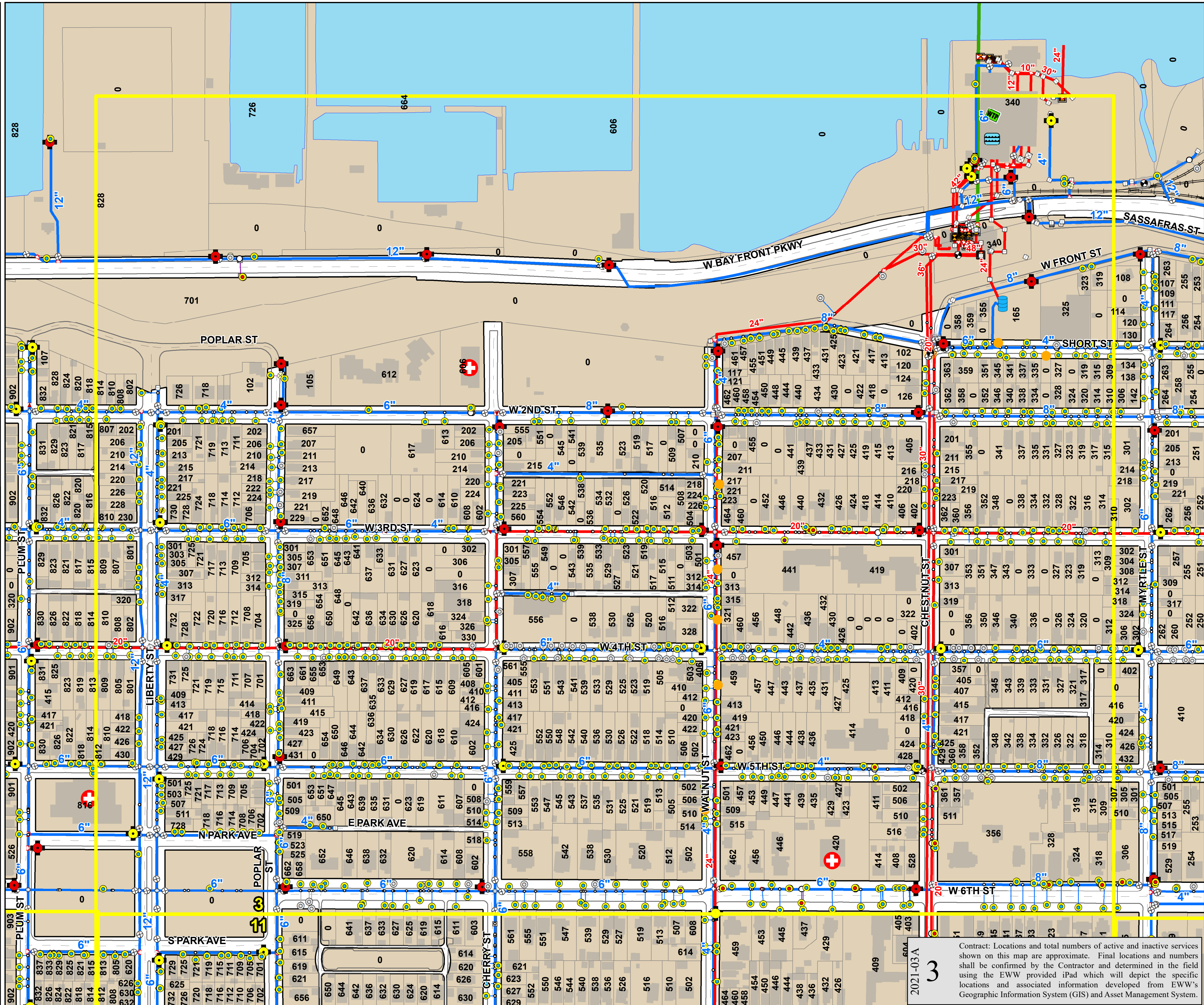
Water Works
Engineering & Construction, Inc.

Scale: 1 inch = 200 feet

Feet

0 50 100 200 300

Printing Date: June 28th, 2023
 File: Engineering/CIP Projects/6- Capital
 Projects 2017-2021-03 PENNVEST
 WIFA Lead Line Replacement Project
 Maps, GIS data, & Construction Estimate



2021-03A
3

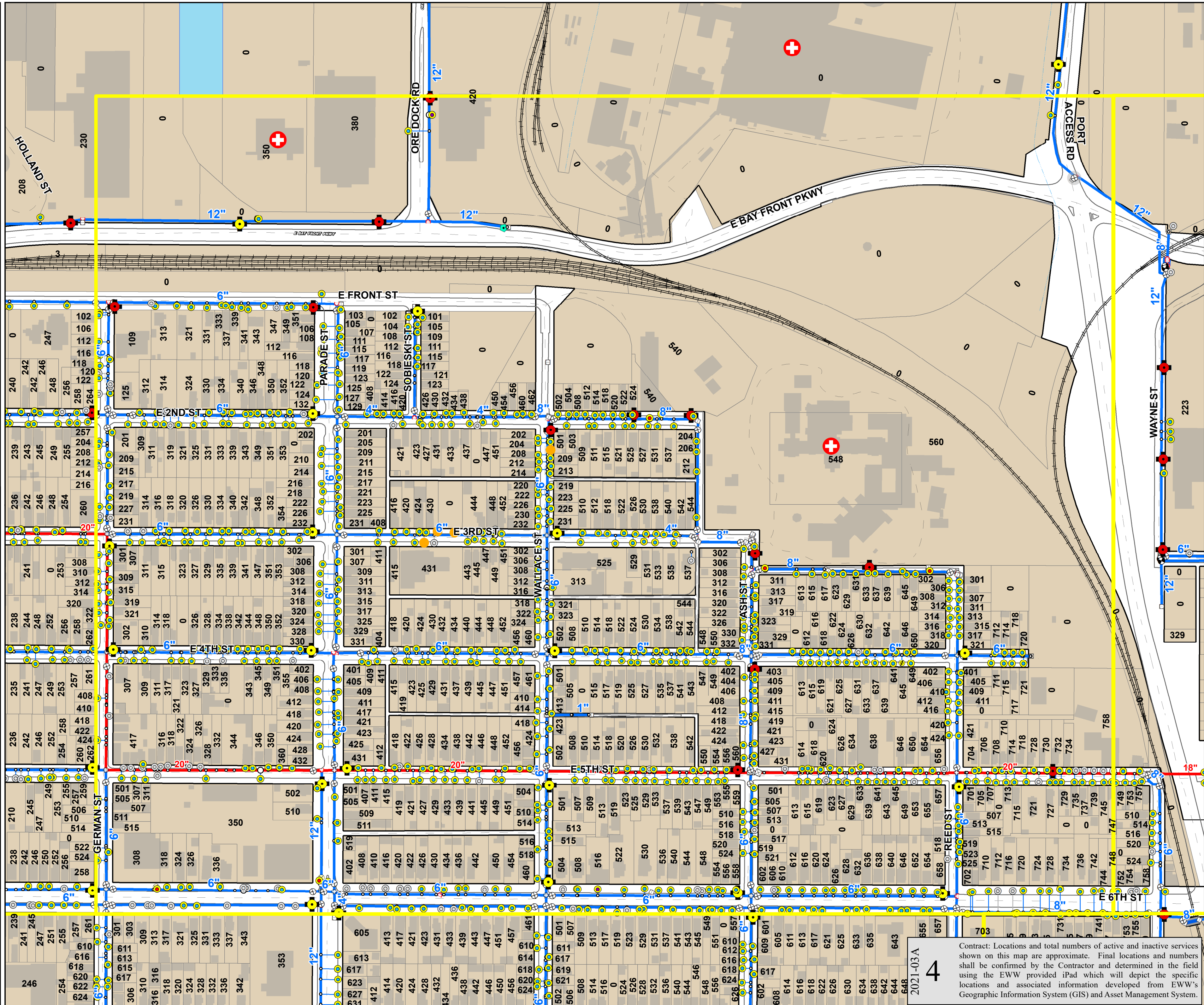
Contract: Locations and total numbers of active and inactive services shown on this map are approximate. Final locations and numbers shall be confirmed by the Contractor and determined in the field using the EWW provided iPad which will depict the specific locations and associated information developed from EWW's Geographic Information System (GIS) and Asset Management System.

2021-03

- Inactive Wrought Iron Services
- Domestic Curb Valve
- Fireline Curb Valve
- Combined Curb Valve
- Inactive Curb Valve
- Hydrant with Branch Valve
- Hydrant no Branch Valve
- Open Gate Valve
- Open Butterfly Valve
- Closed Gate Valve
- Closed Butterfly Valve
- Hydrant Valve
- Fitting
- Cross
- Tee
- Inverter/Reducer
- Corporation Stop
- Smith Tap
- Water Quality Device
- Critical Customer
- Project Area Grid
- Domestic Service Line
- Fire Service Line
- Combined Service Line
- Inactive Service Line
- Hydrant Branch
- Distribution Main
- Transmission Main
- Water Main Casing
- Political Boundary
- Building Footprint
- Right of Way
- Edge of Pavement

Water Works logo with a compass rose and a scale bar showing 0, 50, 100, 200 feet. Below the scale bar, it says "1 inch = 200 feet".

Printing Date: June 28th, 2023
 File: Engineering/CIP Projects/6- Capital Projects 2017-2021-03 PENNVEST
 WIFA Lead Line Replacement Project
 Maps, GIS data, & Construction Estimate



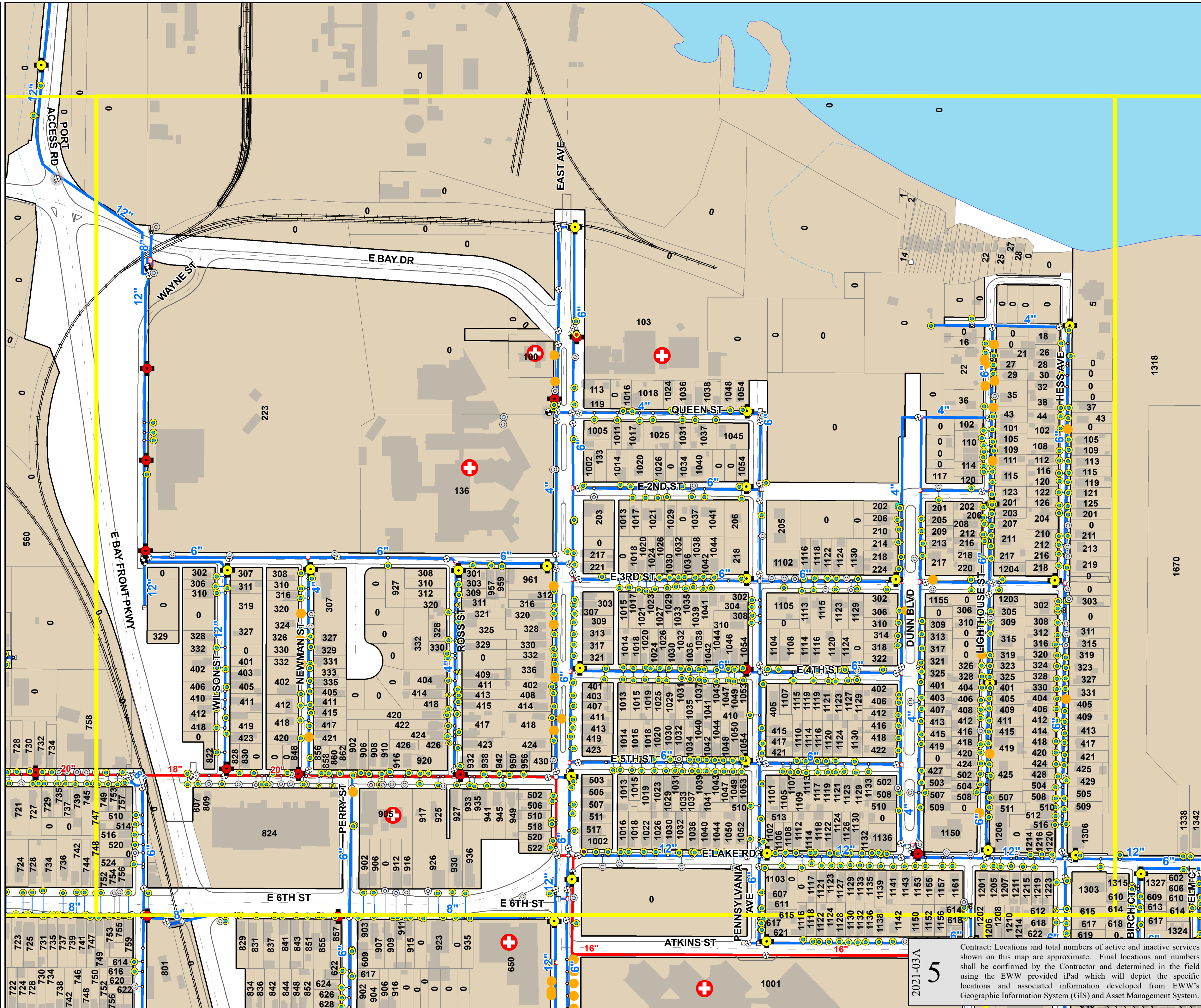
2021-03A
4

Contract: Locations and total numbers of active and inactive services shown on this map are approximate. Final locations and numbers shall be confirmed by the Contractor and determined in the field using the EWW provided iPad which will depict the specific locations and associated information developed from EWW's Geographic Information System (GIS) and Asset Management System.

2021-03

- Inactive Wrought Iron Services
- Domestic Curb Valve
- Fireline Curb Valve
- Combined Curb Valve
- Inactive Curb Valve
- Hydrant with Branch Valve
- Hydrant no Branch Valve
- Open Gate Valve
- Closed Gate Valve
- Open Butterfly Valve
- Closed Butterfly Valve
- Hydrant Valve
- Fitting
- Cross
- Tee
- Inverter/Reducer
- Corporation Stop
- Smith Tap
- Water Quality Device
- Critical Customer
- Project Area Grid
- Domestic Service Line
- Fire Service Line
- Combined Service Line
- Inactive Service Line
- Hydrant Branch
- Distribution Main
- Transmission Main
- Water Main Casing
- Political Boundary
- Building Footprint
- Right of Way
- Edge of Pavement

Water Works Engineering Services, Inc.
 Printing Date: June 28th, 2023
 File: Engineering/CIP Projects/6- Capital
 Projects 2017-2021-03 PENNVEST
 WIFA Lead Line Replacement Project
 Maps, GIS data, & Construction Estimate



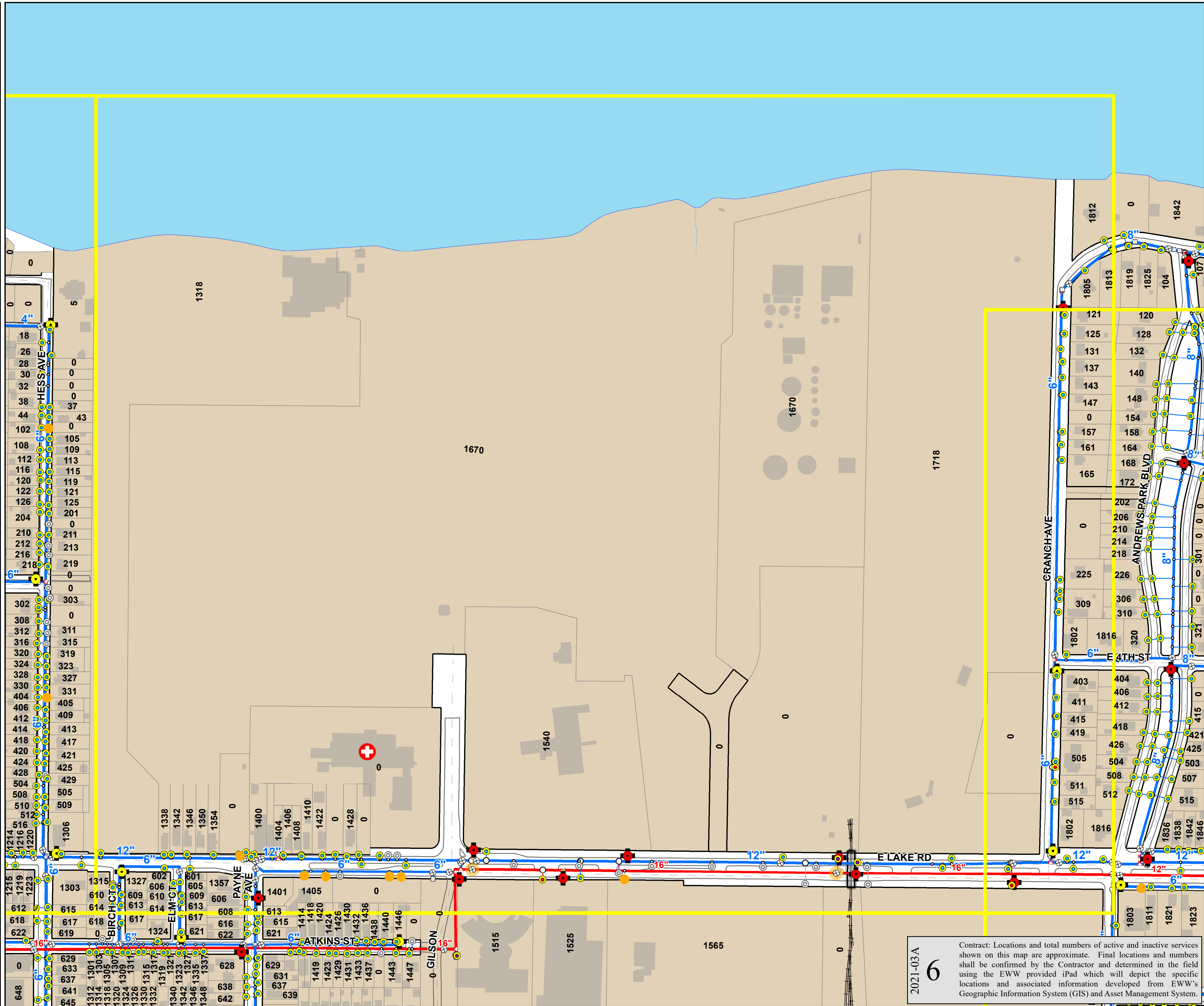
2021-03A
5

Contract: Locations and total numbers of active and inactive services shown on this map are approximate. Final locations and numbers shall be confirmed by the Contractor and determined in the field using the EWW provided iPad which will depict the specific locations and associated information developed from EWW's Geographic Information System (GIS) and Asset Management System.

2021-03

- Inactive Wrought Iron Services
- Domestic Curb Valve
- Fireline Curb Valve
- Combined Curb Valve
- Inactive Curb Valve
- Hydrant with Branch Valve
- Hydrant no Branch Valve
- Open Gate Valve
- Closed Gate Valve
- Open Butterfly Valve
- Closed Butterfly Valve
- Hydrant Valve
- Fitting
- Cross
- Tee
- Inzeaser/Reducer
- Corporation Stop
- Smith Tap
- Water Quality Device
- Critical Customer
- Project Area Grid
- Domestic Service Line
- Fire Service Line
- Combined Service Line
- Inactive Service Line
- Hydrant Branch
- Distribution Main
- Transmission Main
- Water Main Casing
- Political Boundary
- Building Footprint
- Right of Way
- Edge of Pavement

0 50 100 200 300
 Feet
1 inch = 200 feet
 Printing Date: June 28th, 2023
 File: Engineering/CIP Projects/6- Capital
 Projects 2017-2021-03 PENNVEST
 WIFA Lead Line Replacement Project
 Maps, GIS data, & Construction Estimate



2021-03A

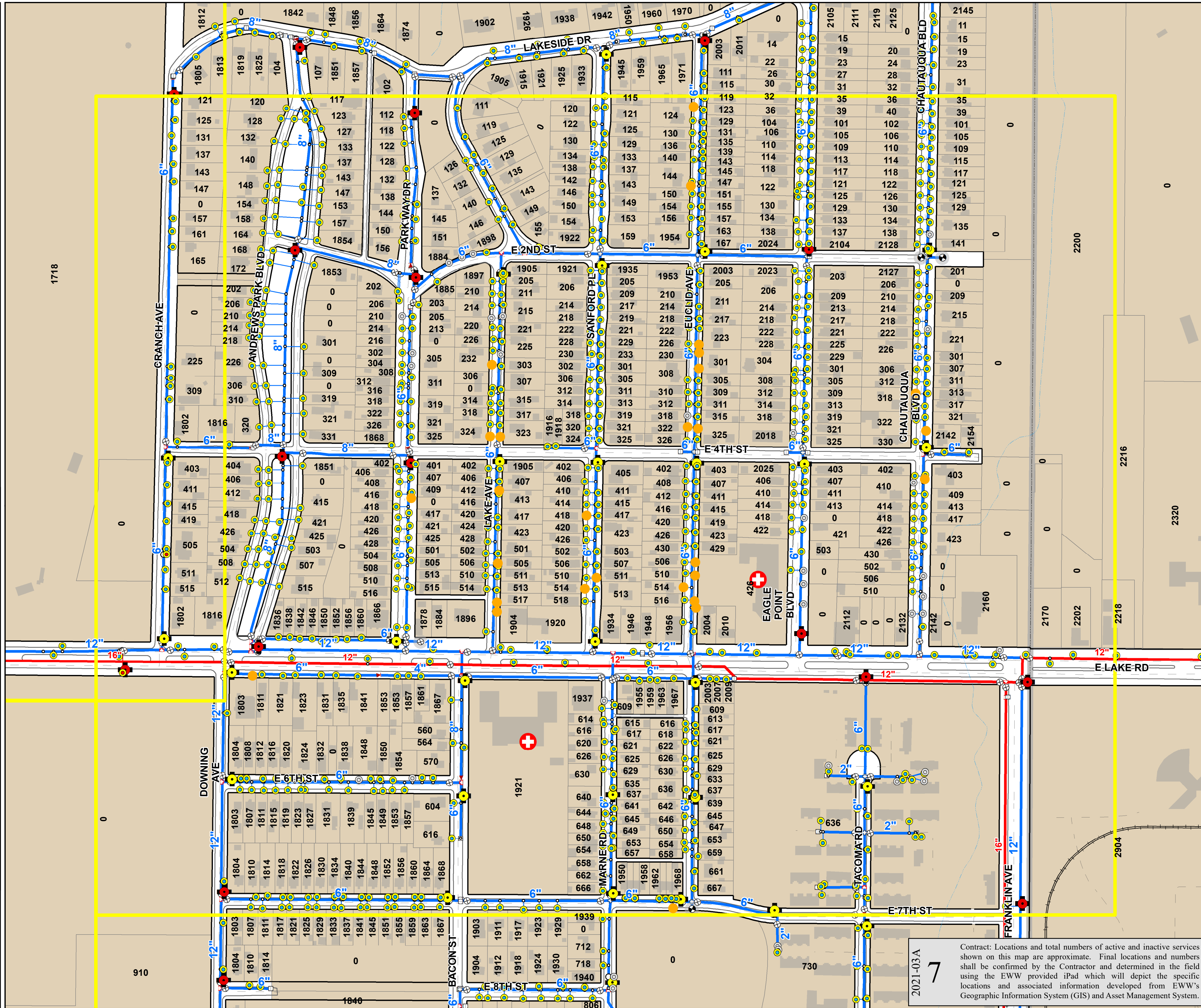
6

Contract: Locations and total numbers of active and inactive services shown on this map are approximate. Final locations and numbers shall be confirmed by the Contractor and determined in the field using the EWW provided iPad which will depict the specific locations and associated information developed from EWW's Geographic Information System (GIS) and Asset Management System.

2021-03

- Inactive Wrought Iron Services
- Domestic Curb Valve
- Fireline Curb Valve
- Combined Curb Valve
- Inactive Curb Valve
- Hydrant with Branch Valve
- Hydrant no Branch Valve
- Open Gate Valve
- Closed Gate Valve
- Open Butterfly Valve
- Closed Butterfly Valve
- Hydrant Valve
- Fitting
- Cross
- Tee
- Inverter/Reducer
- Corporation Stop
- Smith Tap
- Water Quality Device
- Critical Customer
- Project Area Grid
- Domestic Service Line
- Fire Service Line
- Combined Service Line
- Inactive Service Line
- Hydrant Branch
- Distribution Main
- Transmission Main
- Water Main Casing
- Political Boundary
- Building Footprint
- Right of Way
- Edge of Pavement

0 50 100 200 300
 Feet
1 inch = 200 feet
 Printing Date: June 28th, 2023
 File: Engineering/CIP Projects/6- Capital
 Projects 2017-2021-03 PENNVEST
 WIFA Lead Line Replacement Project
 Maps, GIS data, & Construction Estimate



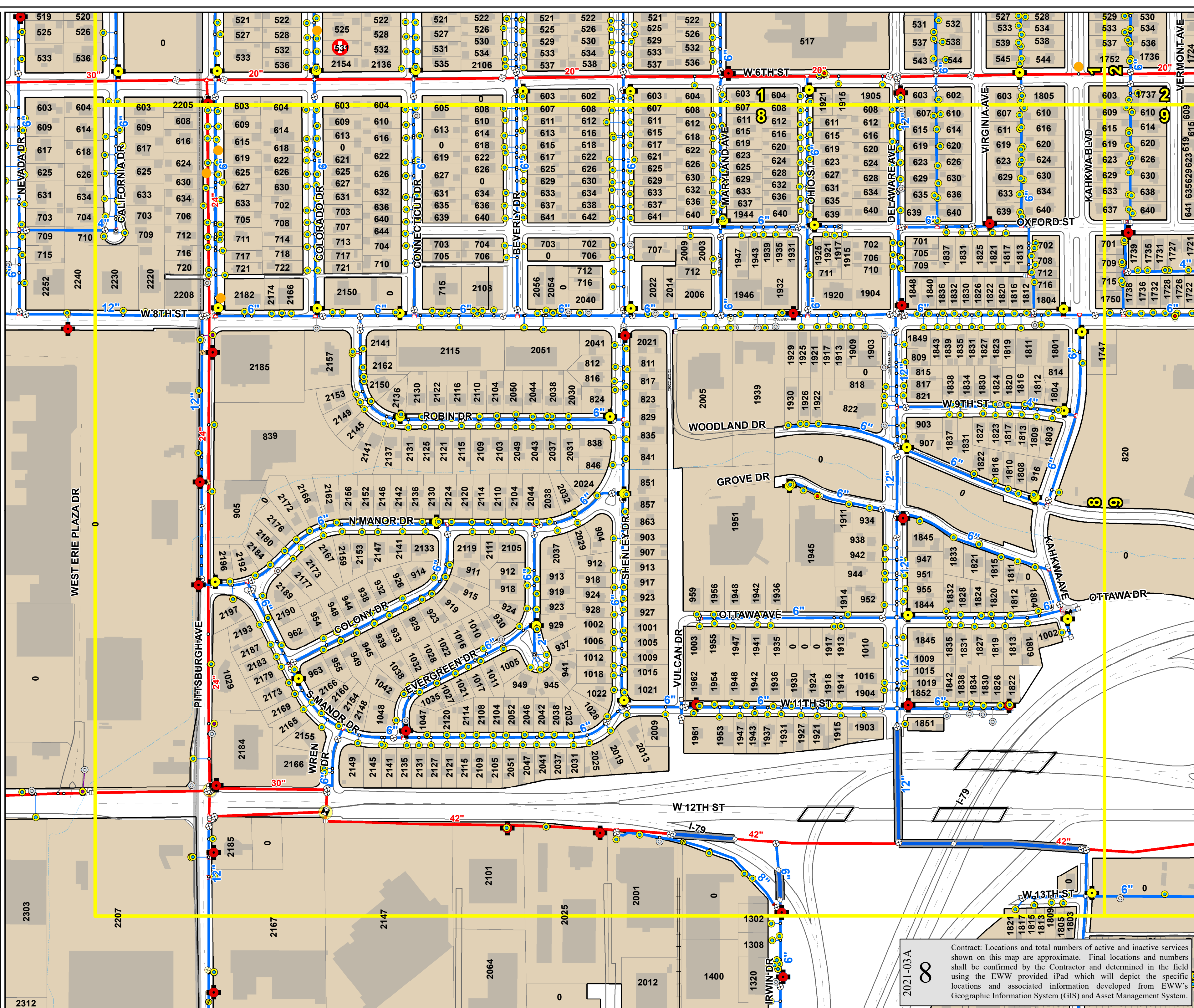
2021-03A
7
 Contract: Locations and total numbers of active and inactive services shown on this map are approximate. Final locations and numbers shall be confirmed by the Contractor and determined in the field using the EWW provided iPad which will depict the specific locations and associated information developed from EWW's Geographic Information System (GIS) and Asset Management System.

Additional Abandonments

2021-03

- Inactive Wrought Iron Services
- Domestic Curb Valve
- Fireline Curb Valve
- Combined Curb Valve
- Inactive Curb Valve
- Hydrant with Branch Valve
- Hydrant no Branch Valve
- Open Gate Valve
- Closed Gate Valve
- Open Butterfly Valve
- Closed Butterfly Valve
- Hydrant Valve
- Fitting
- Cross
- Tee
- Inverter/Reducer
- Corporation Stop
- Smith Tap
- Water Quality Device
- Critical Customer
- Project Area Grid
- Domestic Service Line
- Fire Service Line
- Combined Service Line
- Inactive Service Line
- Hydrant Branch
- Distribution Main
- Transmission Main
- Water Main Casing
- Political Boundary
- Building Footprint
- Right of Way
- Edge of Pavement

0 50 100 200 300
 Feet
1 inch = 200 feet
 Printing Date: June 28th, 2023
 File: Engineering/CIP Projects/6- Capital
 Projects 2017-2021-03 PENNVEST
 WIFA Lead Line Replacement Project
 Maps, GIS data, & Construction Estimate



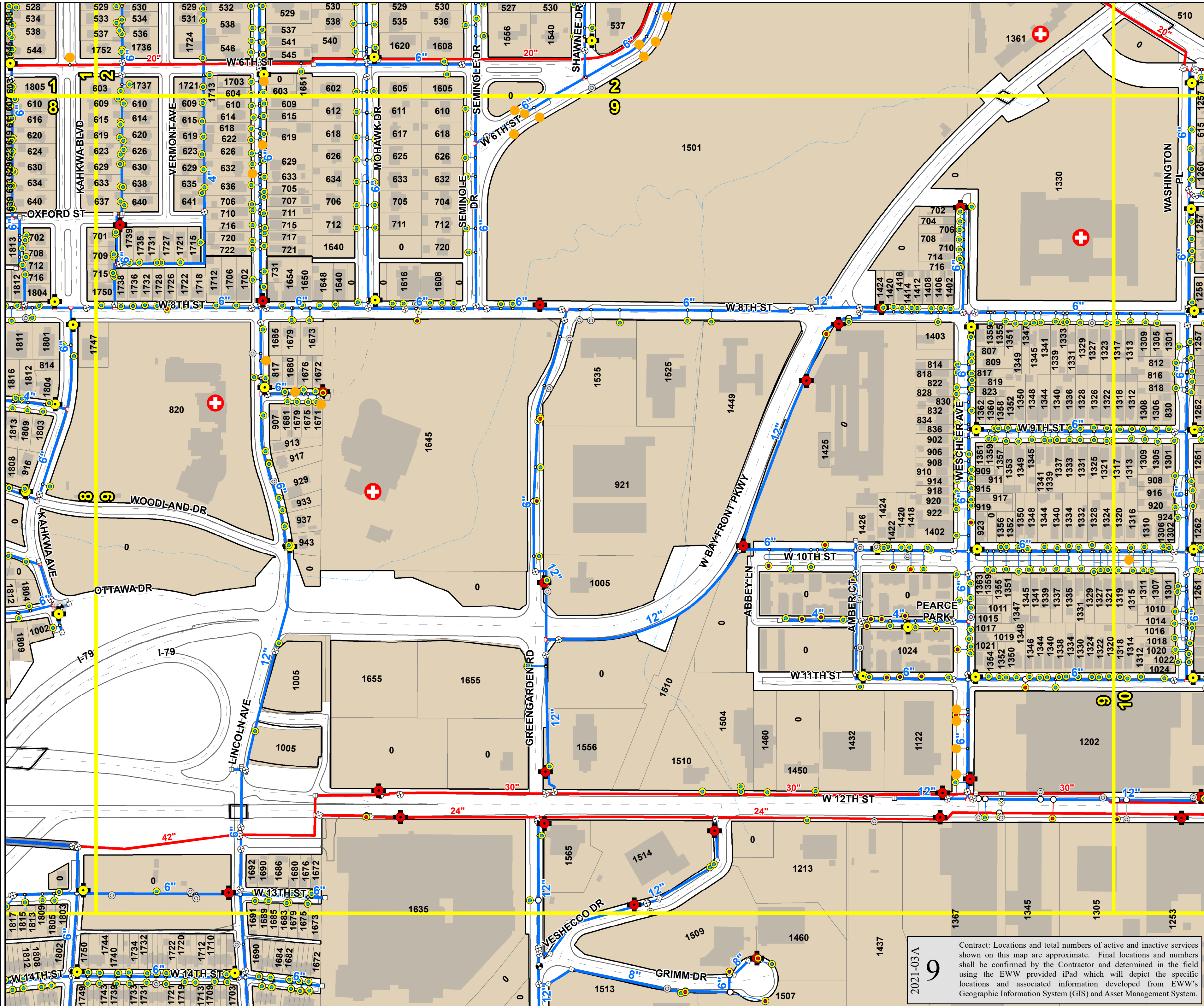
2021-03A **8**
 Contract: Locations and total numbers of active and inactive services shown on this map are approximate. Final locations and numbers shall be confirmed by the Contractor and determined in the field using the EWW provided iPad which will depict the specific locations and associated information developed from EWW's Geographic Information System (GIS) and Asset Management System.

2021-03

- Inactive Wrought Iron Services
- Domestic Curb Valve
- Fireline Curb Valve
- Combined Curb Valve
- Inactive Curb Valve
- Hydrant with Branch Valve
- Hydrant no Branch Valve
- Open Gate Valve
- Closed Gate Valve
- Open Butterfly Valve
- Closed Butterfly Valve
- Hydrant Valve
- Fitting
- Cross
- Tee
- Inverter/Reducer
- Corporation Stop
- Smith Tap
- Water Quality Device
- Critical Customer
- Project Area Grid
- Domestic Service Line
- Fire Service Line
- Combined Service Line
- Inactive Service Line
- Hydrant Branch
- Distribution Main
- Transmission Main
- Water Main Casing
- Political Boundary
- Building Footprint
- Right of Way
- Edge of Pavement

Scale: 1 inch = 200 feet

Printing Date: June 28th, 2023
 File: Engineering/CIP Projects/6- Capital Projects 2017-2021-03 PENNVEST WIFA Lead Line Replacement Project Maps, GIS data, & Construction Estimate



2021-03A

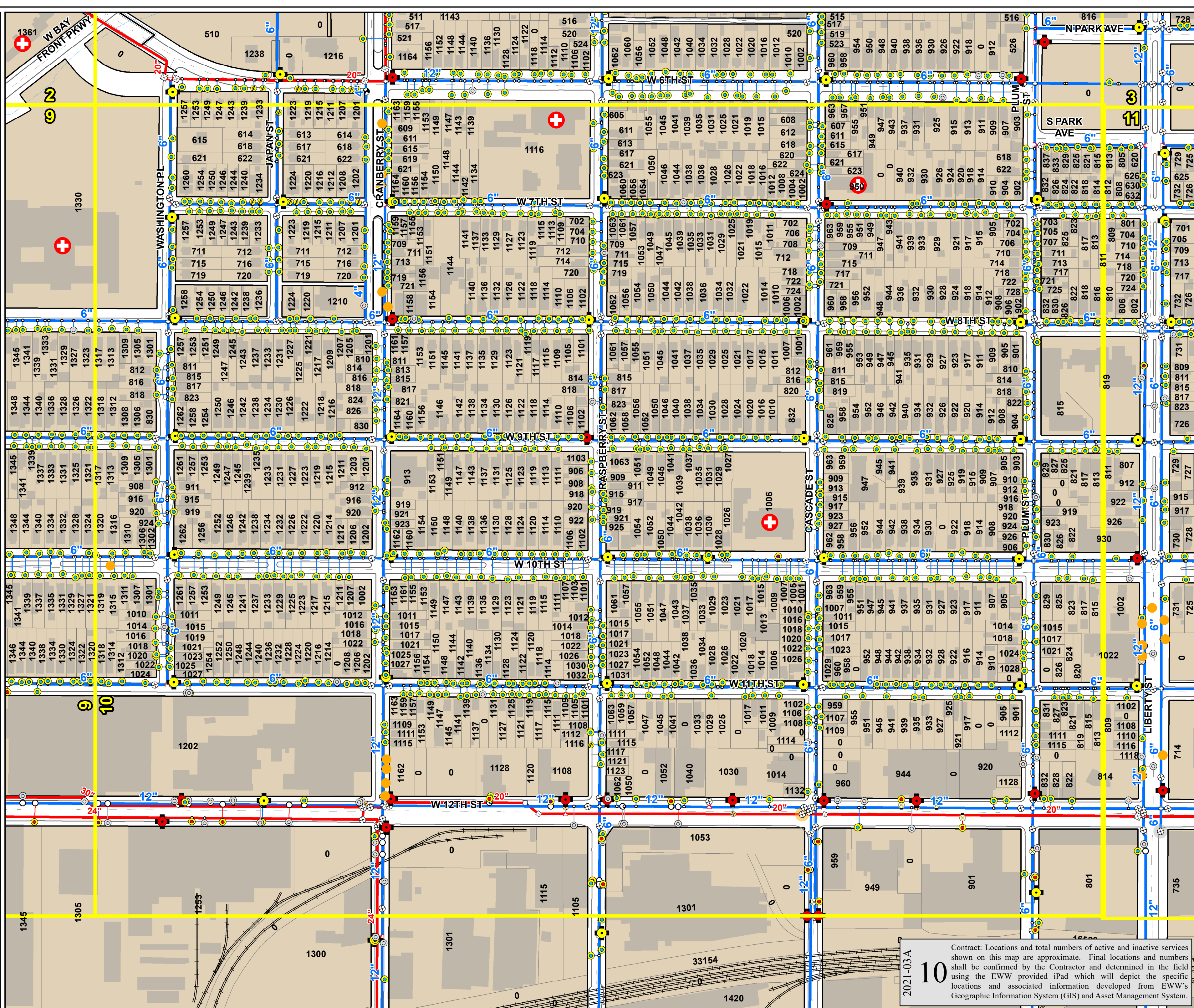
9

Contract: Locations and total numbers of active and inactive services shown on this map are approximate. Final locations and numbers shall be confirmed by the Contractor and determined in the field using the EWW provided iPad which will depict the specific locations and associated information developed from EWW's Geographic Information System (GIS) and Asset Management System.

2021-03

- Inactive Wrought Iron Services
- Domestic Curb Valve
- Fireline Curb Valve
- Combined Curb Valve
- Inactive Curb Valve
- Hydrant with Branch Valve
- Hydrant no Branch Valve
- Open Gate Valve
- Closed Gate Valve
- Open Butterfly Valve
- Closed Butterfly Valve
- Hydrant Valve
- Fitting
- Cross
- Tee
- Inverter/Reducer
- Corporation Stop
- Smith Tap
- Water Quality Device
- Critical Customer
- Project Area Grid
- Domestic Service Line
- Fire Service Line
- Combined Service Line
- Inactive Service Line
- Hydrant Branch
- Distribution Main
- Transmission Main
- Water Main Casing
- Political Boundary
- Building Footprint
- Right of Way
- Edge of Pavement

0 50 100 200 300 Feet
1 inch = 200 feet
 Printing Date: June 28th, 2023
 File: Engineering/CIP Projects/6- Capital Projects 2017-2021-03 PENNVEST WIFA Lead Line Replacement Project Maps, GIS data, & Construction Estimate



2021-03A **10**

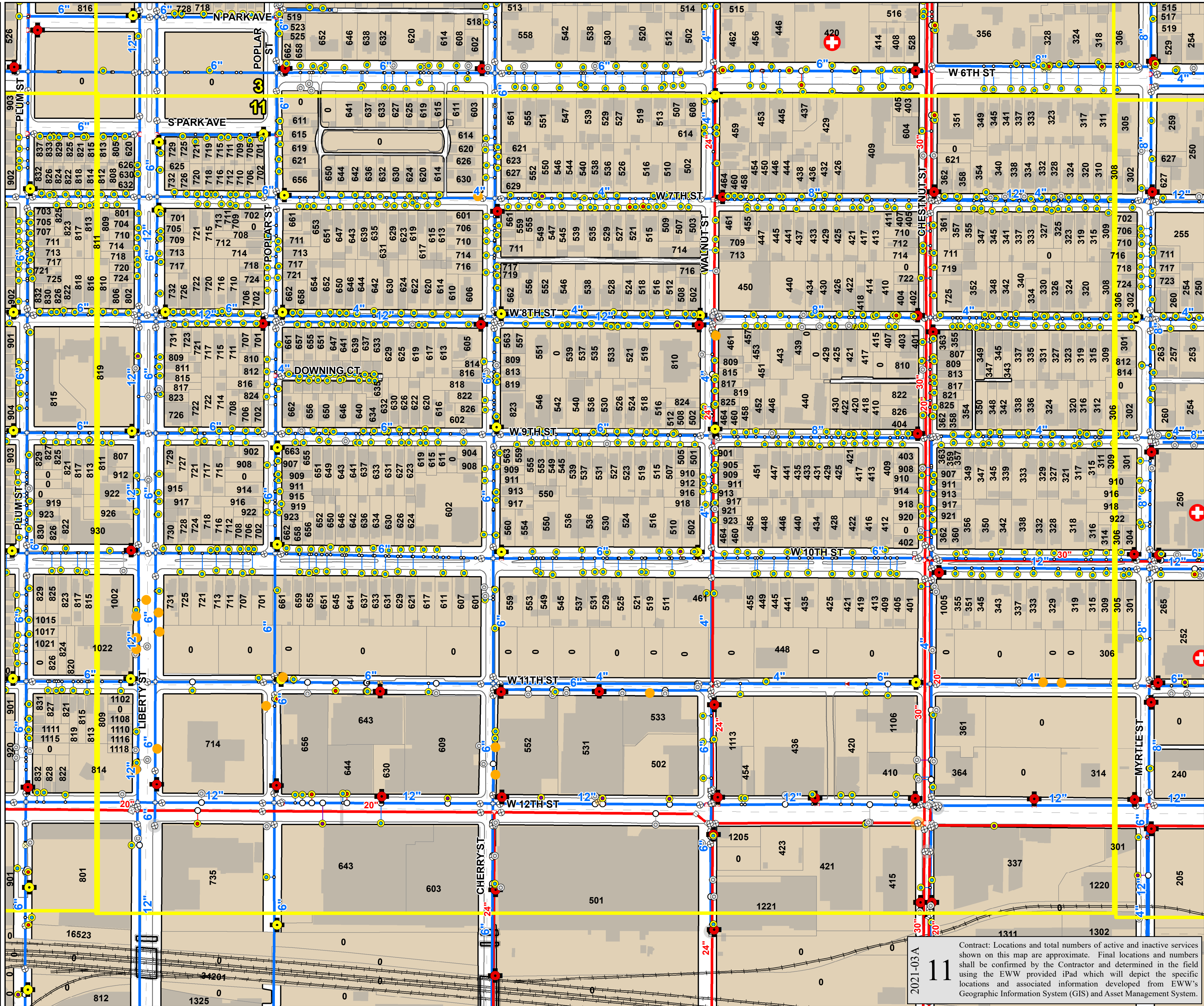
Contract: Locations and total numbers of active and inactive services shown on this map are approximate. Final locations and numbers shall be confirmed by the Contractor and determined in the field using the EWW provided iPad which will depict the specific locations and associated information developed from EWW's Geographic Information System (GIS) and Asset Management System.

2021-03

- Inactive Wrought Iron Services
- Domestic Curb Valve
- Fireline Curb Valve
- Combined Curb Valve
- Inactive Curb Valve
- Hydrant with Branch Valve
- Hydrant no Branch Valve
- Open Gate Valve
- Closed Gate Valve
- Open Butterfly Valve
- Closed Butterfly Valve
- Hydrant Valve
- Fitting
- Cross
- Tee
- Inverter/Reducer
- Corporation Stop
- Smith Tap
- Water Quality Device
- Critical Customer
- Project Area Grid
- Domestic Service Line
- Fire Service Line
- Combined Service Line
- Inactive Service Line
- Hydrant Branch
- Distribution Main
- Transmission Main
- Water Main Casing
- Political Boundary
- Building Footprint
- Right of Way
- Edge of Pavement

Printing Date: June 28th, 2023
 File: Engineering/CIP Projects/6- Capital Projects 2017-2021-03 PENNVEST WIFA Lead Line Replacement Project
 Maps, GIS data, & Construction Estimate

0 50 100 200 300
 Feet
1 inch = 200 feet



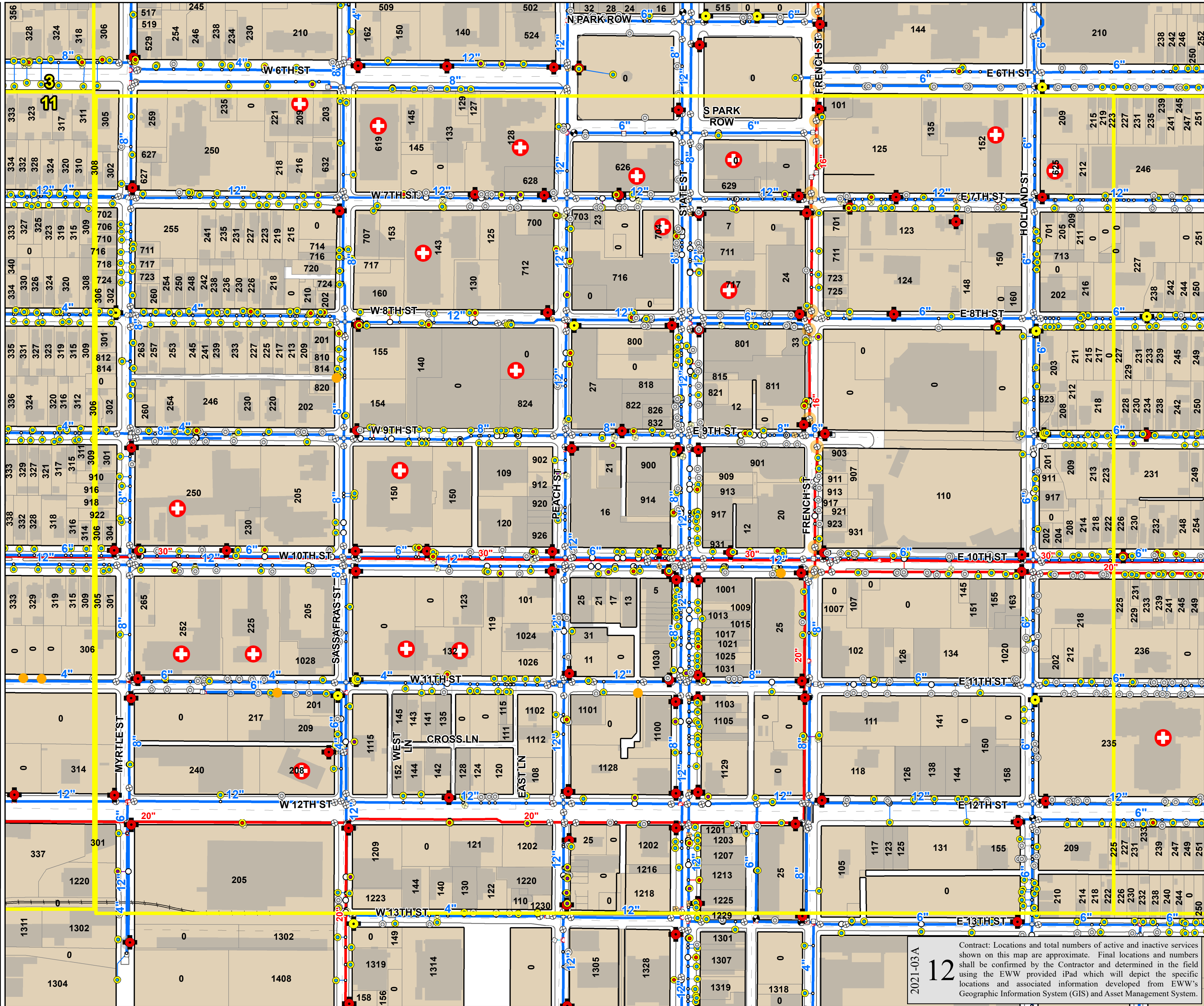
2021-03A **11**
 Contract: Locations and total numbers of active and inactive services shown on this map are approximate. Final locations and numbers shall be confirmed by the Contractor and determined in the field using the EWW provided iPad which will depict the specific locations and associated information developed from EWW's Geographic Information System (GIS) and Asset Management System.

2021-03

- Inactive Wrought Iron Services
- Domestic Curb Valve
- Fireline Curb Valve
- Combined Curb Valve
- Inactive Curb Valve
- Hydrant with Branch Valve
- Hydrant no Branch Valve
- Open Gate Valve
- Closed Gate Valve
- Open Butterfly Valve
- Closed Butterfly Valve
- Hydrant Valve
- Fitting
- Cross
- Tee
- Inverter/Reducer
- Corporation Stop
- Smith Tap
- Water Quality Device
- Critical Customer
- Project Area Grid
- Domestic Service Line
- Fire Service Line
- Combined Service Line
- Inactive Service Line
- Hydrant Branch
- Distribution Main
- Transmission Main
- Water Main Casing
- Political Boundary
- Building Footprint
- Right of Way
- Edge of Pavement

1 inch = 200 feet

Printing Date: June 28th, 2023
 File: Engineering/CIP Projects/6- Capital
 Projects 2017-2021-03 PENNVEST
 WIFA Lead Line Replacement Project
 Maps, GIS data, & Construction Estimate



2021-03A

12

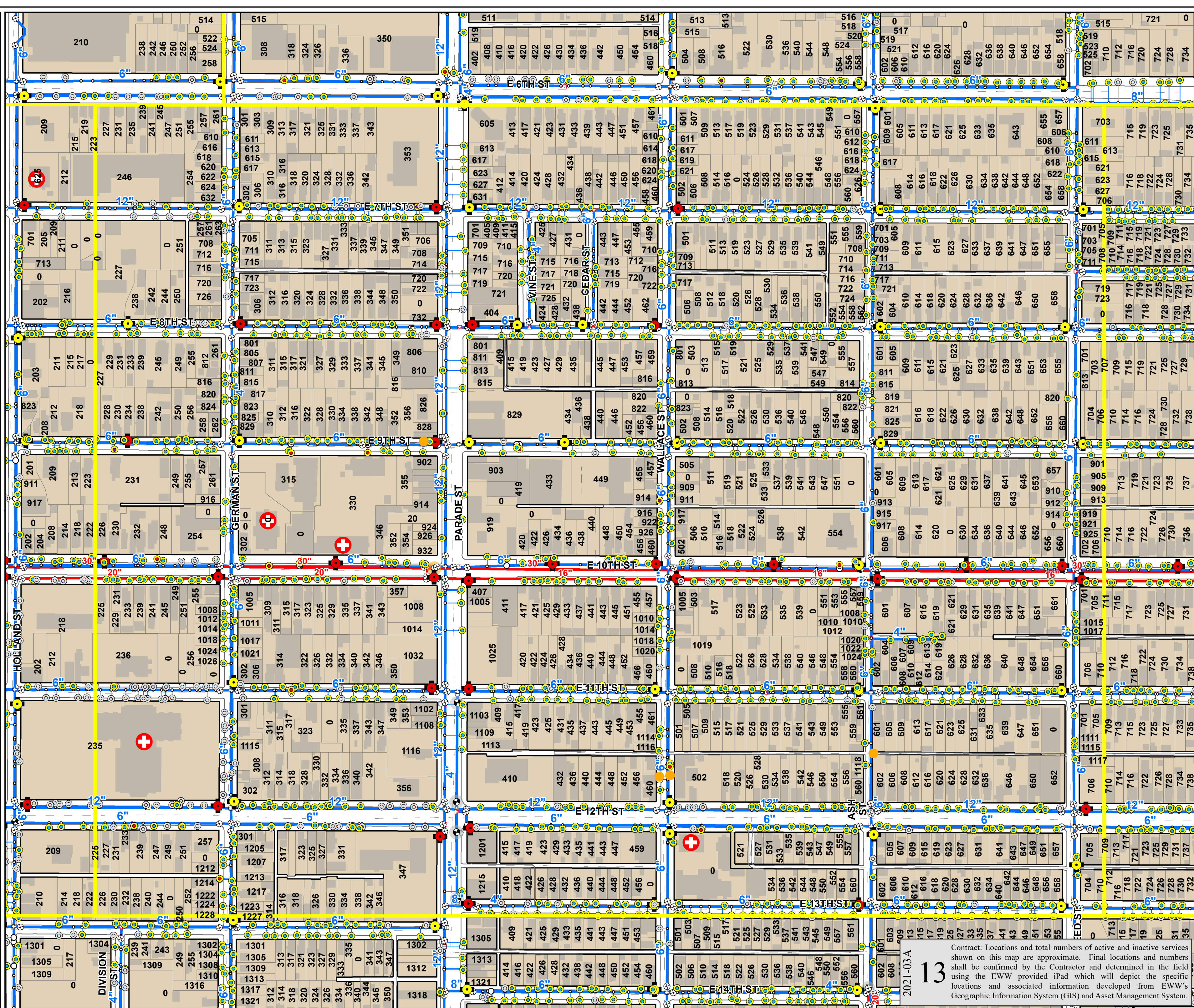
Contract: Locations and total numbers of active and inactive services shown on this map are approximate. Final locations and numbers shall be confirmed by the Contractor and determined in the field using the EWW provided iPad which will depict the specific locations and associated information developed from EWW's Geographic Information System (GIS) and Asset Management System.

2021-03

- Inactive Wrought Iron Services
- Domestic Curb Valve
- Fireline Curb Valve
- Combined Curb Valve
- Inactive Curb Valve
- Hydrant with Branch Valve
- Hydrant no Branch Valve
- Open Gate Valve
- Closed Gate Valve
- Open Butterfly Valve
- Closed Butterfly Valve
- Hydrant Valve
- Fitting
- Cross
- Tee
- Incraser/Reducer
- Corporation Stop
- Smith Tap
- Water Quality Device
- Critical Customer
- Project Area Grid
- Domestic Service Line
- Fire Service Line
- Combined Service Line
- Inactive Service Line
- Hydrant Branch
- Distribution Main
- Transmission Main
- Water Main Casing
- Political Boundary
- Building Footprint
- Right of Way
- Edge of Pavement

Scale: 1 inch = 200 feet

Printing Date: June 28th, 2023
 File: Engineering/CIP Projects/6-Capital Projects 2017-2021-03 PENNVEST WIFA Lead Line Replacement Project
 Maps, GIS data, & Construction Estimate



2021-03A

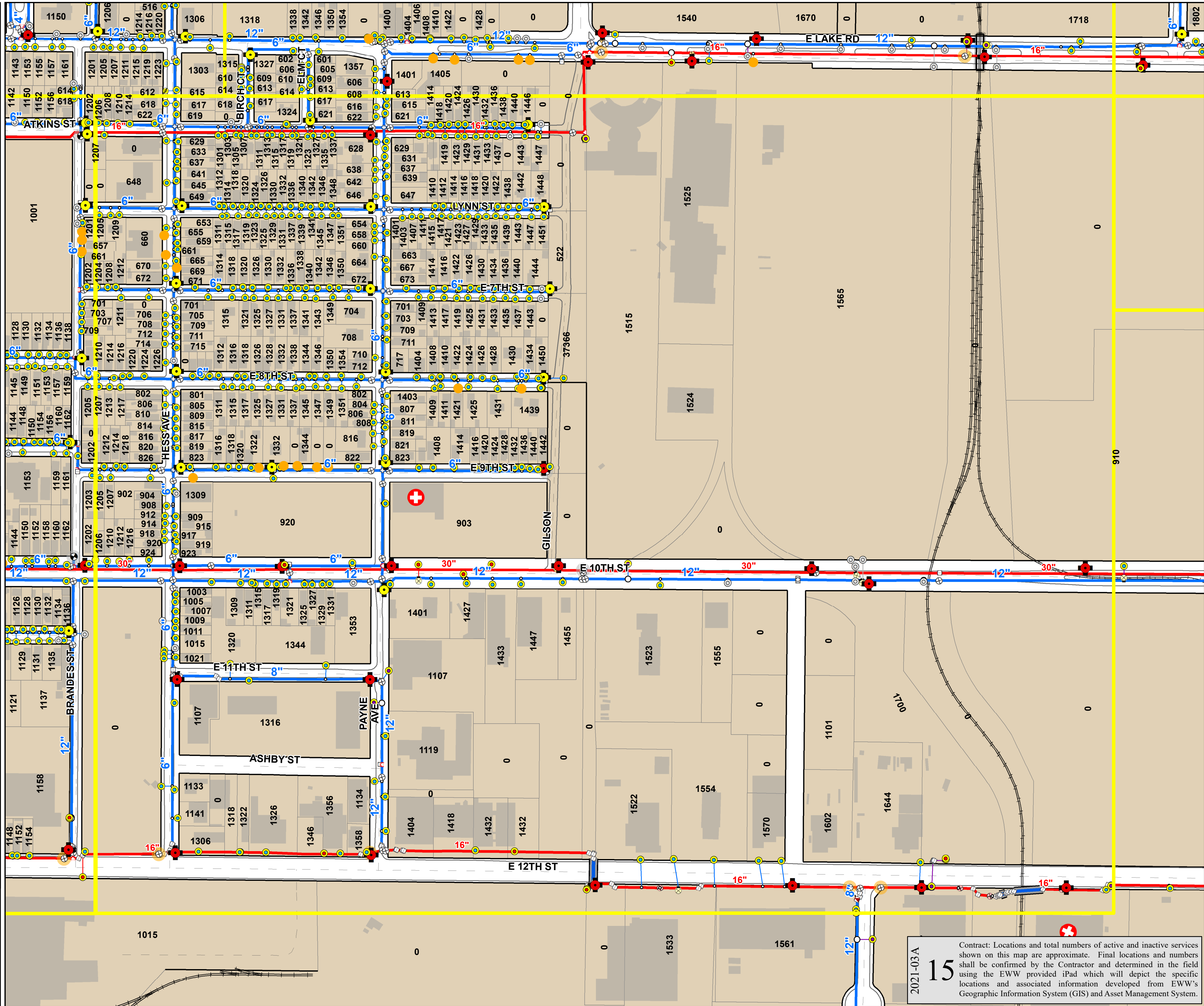
13

Contract: Locations and total numbers of active and inactive services shown on this map are approximate. Final locations and numbers shall be confirmed by the Contractor and determined in the field using the EWW provided iPad which will depict the specific locations and associated information developed from EWW's Geographic Information System (GIS) and Asset Management System.

2021-03

- Inactive Wrought Iron Services
- Domestic Curb Valve
- Fireline Curb Valve
- Combined Curb Valve
- Inactive Curb Valve
- Hydrant with Branch Valve
- Hydrant no Branch Valve
- Open Gate Valve
- Closed Gate Valve
- Open Butterfly Valve
- Closed Butterfly Valve
- Hydrant Valve
- Fitting
- Cross
- Tee
- Inverter/Reducer
- Corporation Stop
- Smith Tap
- Water Quality Device
- Critical Customer
- Project Area Grid
- Domestic Service Line
- Fire Service Line
- Combined Service Line
- Inactive Service Line
- Hydrant Branch
- Distribution Main
- Transmission Main
- Water Main Casing
- Political Boundary
- Building Footprint
- Right of Way
- Edge of Pavement

0 50 100 200 300
 Feet
1 inch = 200 feet
 Printing Date: June 28th, 2023
 File: Engineering/CIP Projects/6- Capital
 Projects 2017-2021-03 PENNVEST
 WIFA Lead Line Replacement Project
 Maps, GIS data, & Construction Estimate



2021-03A
15
 Contract: Locations and total numbers of active and inactive services shown on this map are approximate. Final locations and numbers shall be confirmed by the Contractor and determined in the field using the EWW provided iPad which will depict the specific locations and associated information developed from EWW's Geographic Information System (GIS) and Asset Management System.

Additional Abandonments

2021-03

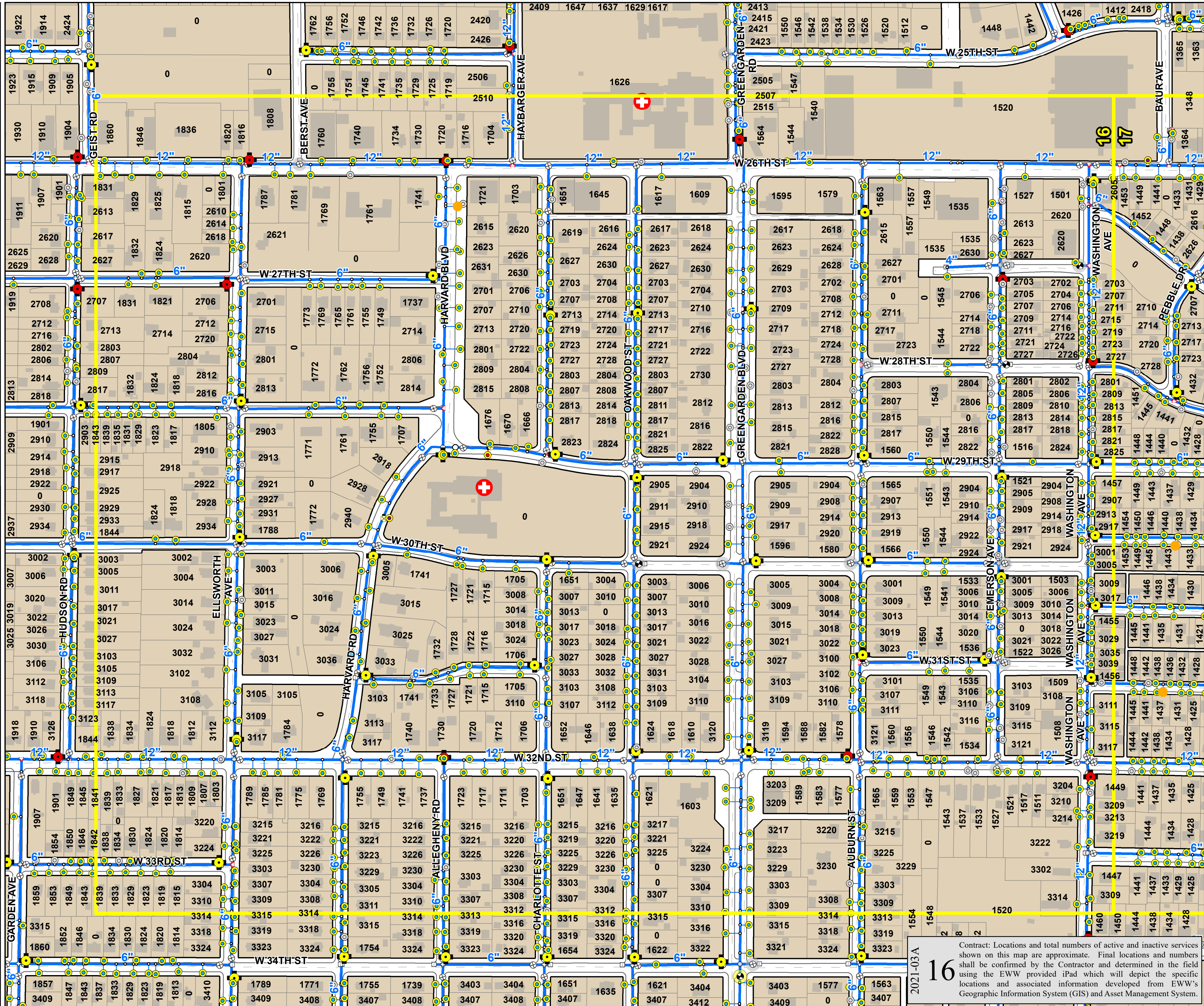
- Inactive Wrought Iron Services
- Domestic Curb Valve
- Fireline Curb Valve
- Combined Curb Valve
- Inactive Curb Valve
- Hydrant with Branch Valve
- Hydrant no Branch Valve
- Open Gate Valve
- Closed Gate Valve
- Open Butterfly Valve
- Closed Butterfly Valve
- Hydrant Valve
- Fitting
- Cross
- Tee
- Inverter/Reducer
- Corporation Stop
- Smith Tap
- Water Quality Device
- Critical Customer
- Project Area Grid
- Domestic Service Line
- Fire Service Line
- Combined Service Line
- Inactive Service Line
- Hydrant Branch
- Distribution Main
- Transmission Main
- Water Main Casing
- Political Boundary
- Building Footprint
- Right of Way
- Edge of Pavement

Water Works Engineering & Construction, Inc.
 11500 York Road, Suite 100
 York, PA 17403
 Phone: 717-765-1100
 Fax: 717-765-1101
 Email: info@waterworksinc.com

Printing Date: June 28th, 2023
 File: Engineering/CIP Projects/6- Capital Projects/2021-2023-03 PENNVEST/WIFA Lead Line Replacement Project/Maps, GIS data, & Construction Estimate

1 inch = 200 feet

0 50 100 200 300 Feet



2021-03A

16

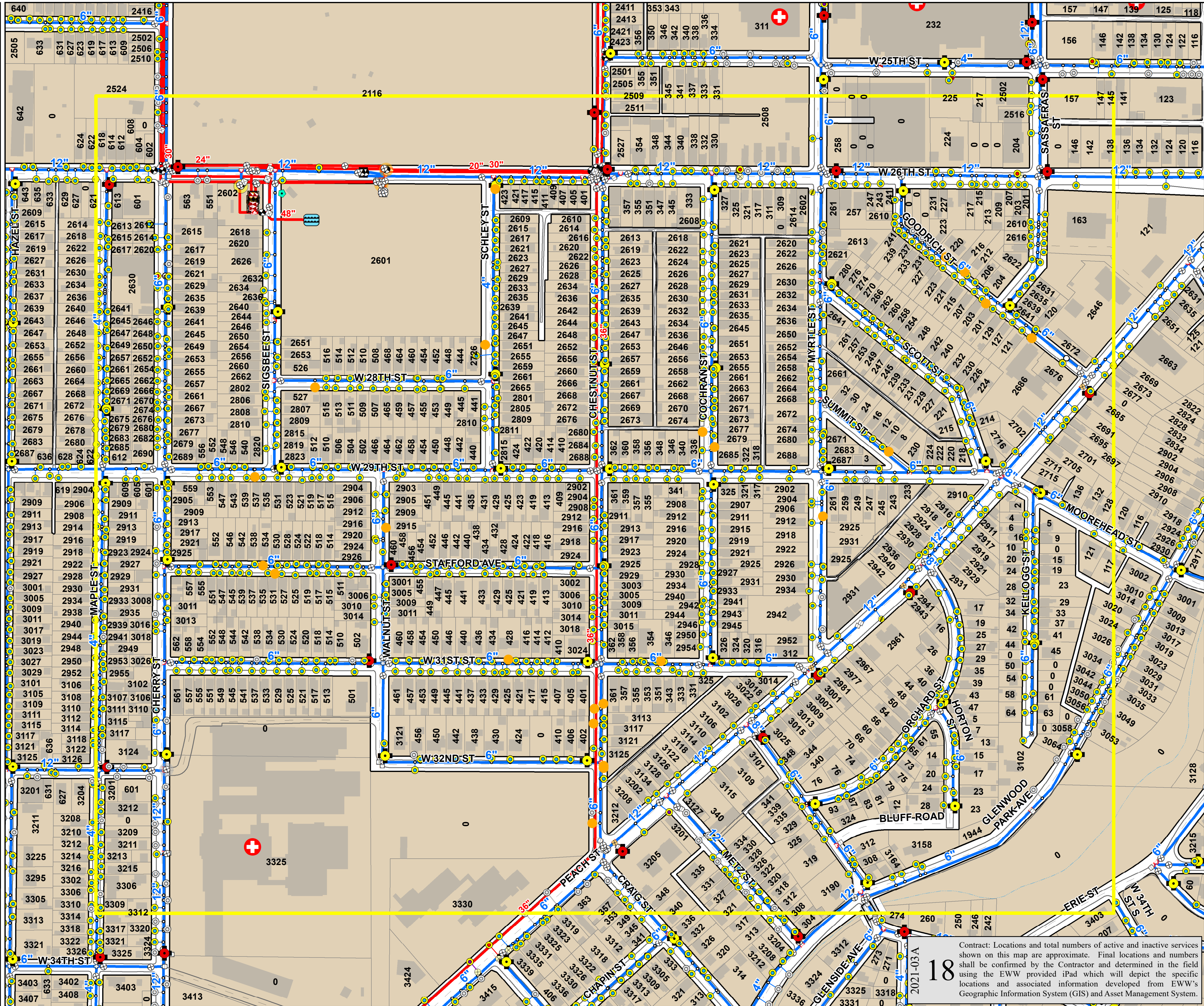
Contract: Locations and total numbers of active and inactive services shown on this map are approximate. Final locations and numbers shall be confirmed by the Contractor and determined in the field using the EWW provided iPad which will depict the specific locations and associated information developed from EWW's Geographic Information System (GIS) and Asset Management System.

2021-03

- Inactive Wrought Iron Services
- Domestic Curb Valve
- Fireline Curb Valve
- Combined Curb Valve
- Inactive Curb Valve
- Hydrant with Branch Valve
- Hydrant no Branch Valve
- Open Gate Valve
- Closed Gate Valve
- Open Butterfly Valve
- Closed Butterfly Valve
- Hydrant Valve
- Fitting
- Cross
- Tee
- Inverter/Reducer
- Corporation Stop
- Smith Tap
- Water Quality Device
- Critical Customer
- Project Area Grid
- Domestic Service Line
- Fire Service Line
- Combined Service Line
- Inactive Service Line
- Hydrant Branch
- Distribution Main
- Transmission Main
- Water Main Casing
- Political Boundary
- Building Footprint
- Right of Way
- Edge of Pavement

1 inch = 200 feet

Printing Date: June 28th, 2023
 File: Engineering/CIP Projects/6- Capital Projects 2017-2021-03 PENNVEST WIFA Lead Line Replacement Project
 Maps, GIS data, & Construction Estimate



Contract: Locations and total numbers of active and inactive services shown on this map are approximate. Final locations and numbers shall be confirmed by the Contractor and determined in the field using the EWW provided iPad which will depict the specific locations and associated information developed from EWW's Geographic Information System (GIS) and Asset Management System.

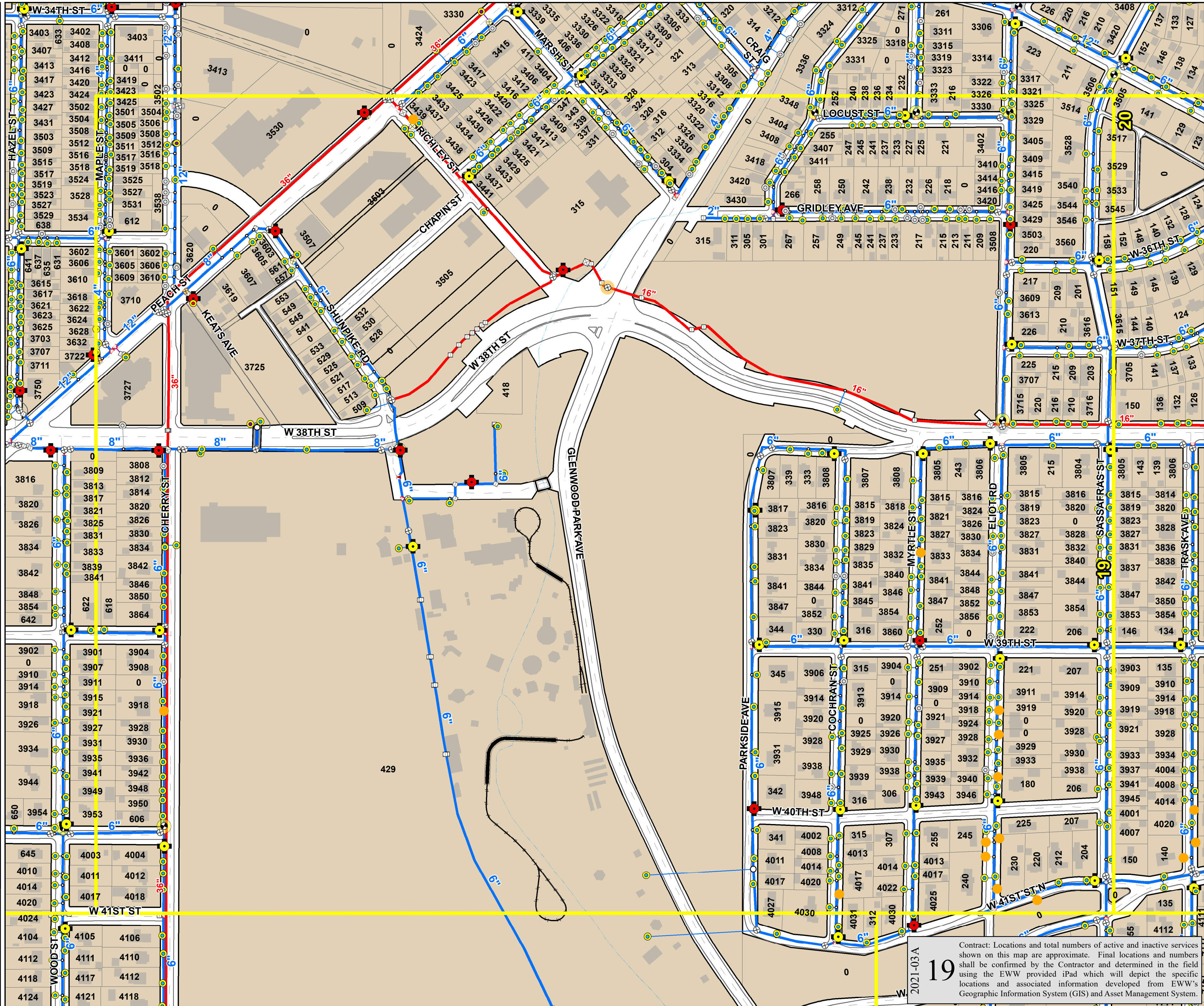
18

2021-03 A

2021-03

- Inactive Wrought Iron Services
- Domestic Curb Valve
- Fireline Curb Valve
- Combined Curb Valve
- Inactive Curb Valve
- Hydrant with Branch Valve
- Hydrant no Branch Valve
- Open Gate Valve
- Closed Gate Valve
- Open Butterfly Valve
- Closed Butterfly Valve
- Hydrant Valve
- Fitting
- Cross
- Tee
- Inverter/Reducer
- Corporation Stop
- Smith Tap
- Water Quality Device
- Critical Customer
- Project Area Grid
- Domestic Service Line
- Fire Service Line
- Combined Service Line
- Inactive Service Line
- Hydrant Branch
- Distribution Main
- Transmission Main
- Water Main Casing
- Political Boundary
- Building Footprint
- Right of Way
- Edge of Pavement

0 50 100 200 300
Feet
1 inch = 200 feet
Printing Date: June 28th, 2023
File: Engineering/CIP Projects/6- Capital Projects 2017-2021-03 PENNVEST WIFA Lead Line Replacement Project Maps, GIS data, & Construction Estimate



2021-03A
19
Contract: Locations and total numbers of active and inactive services shown on this map are approximate. Final locations and numbers shall be confirmed by the Contractor and determined in the field using the EWW provided iPad which will depict the specific locations and associated information developed from EWW's Geographic Information System (GIS) and Asset Management System.

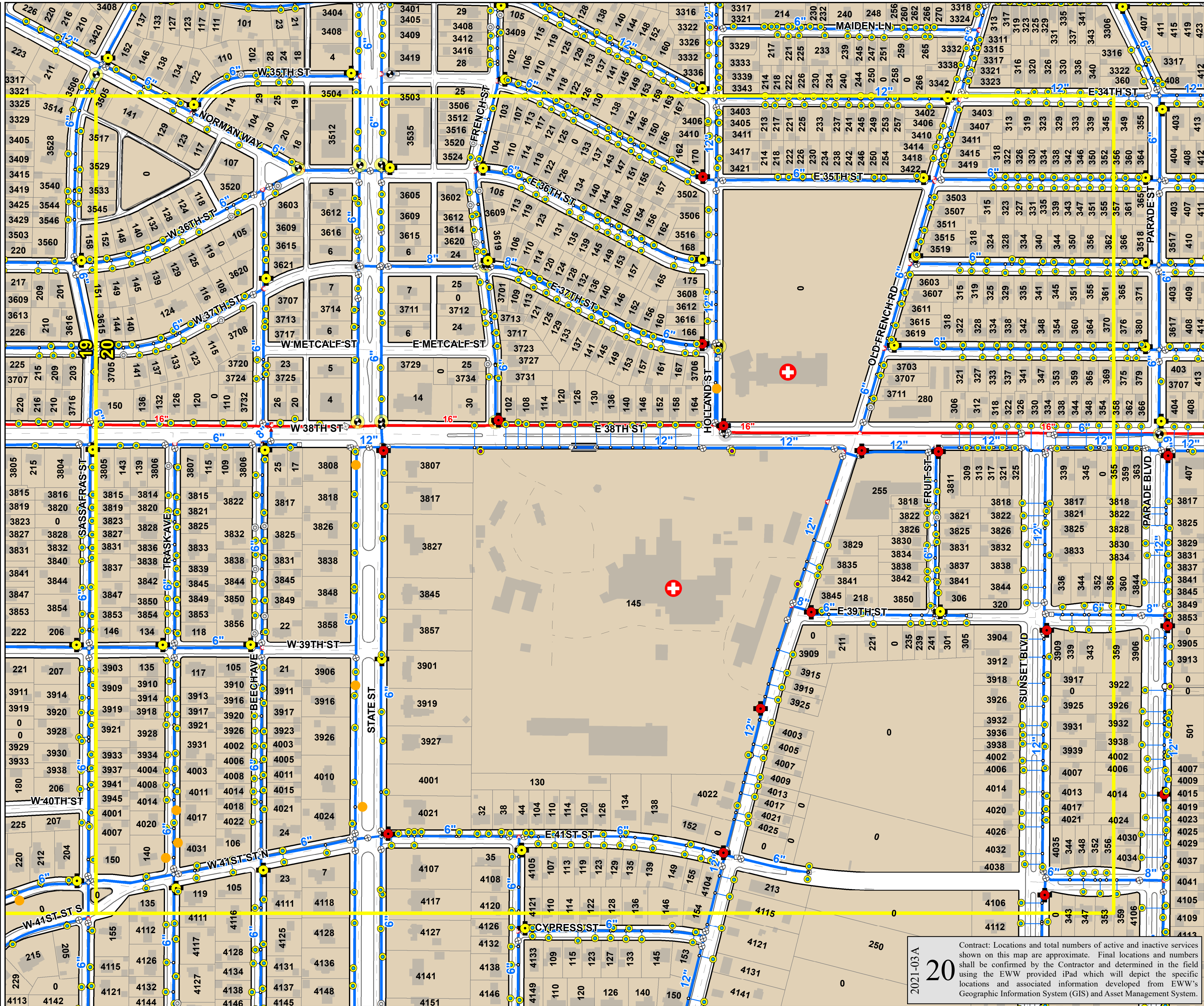
Additional Abandonments

2021-03

- Inactive Wrought Iron Services
- Domestic Curb Valve
- Fireline Curb Valve
- Combined Curb Valve
- Inactive Curb Valve
- Hydrant with Branch Valve
- Hydrant no Branch Valve
- Open Gate Valve
- Closed Gate Valve
- Open Butterfly Valve
- Closed Butterfly Valve
- Hydrant Valve
- Fitting
- Cross
- Tee
- Increaser/Reducer
- Corporation Stop
- Smith Tap
- Water Quality Device
- Critical Customer
- Project Area Grid
- Domestic Service Line
- Fire Service Line
- Combined Service Line
- Inactive Service Line
- Hydrant Branch
- Distribution Main
- Transmission Main
- Water Main Casing
- Political Boundary
- Building Footprint
- Right of Way
- Edge of Pavement

1 inch = 200 feet

Printing Date: June 28th, 2023
File: Engineering/CIP Projects/6- Capital Projects 2017-2021-03 PENNVEST WIFA Lead Line Replacement Project
Maps, GIS data, & Construction Estimate



2021-03A

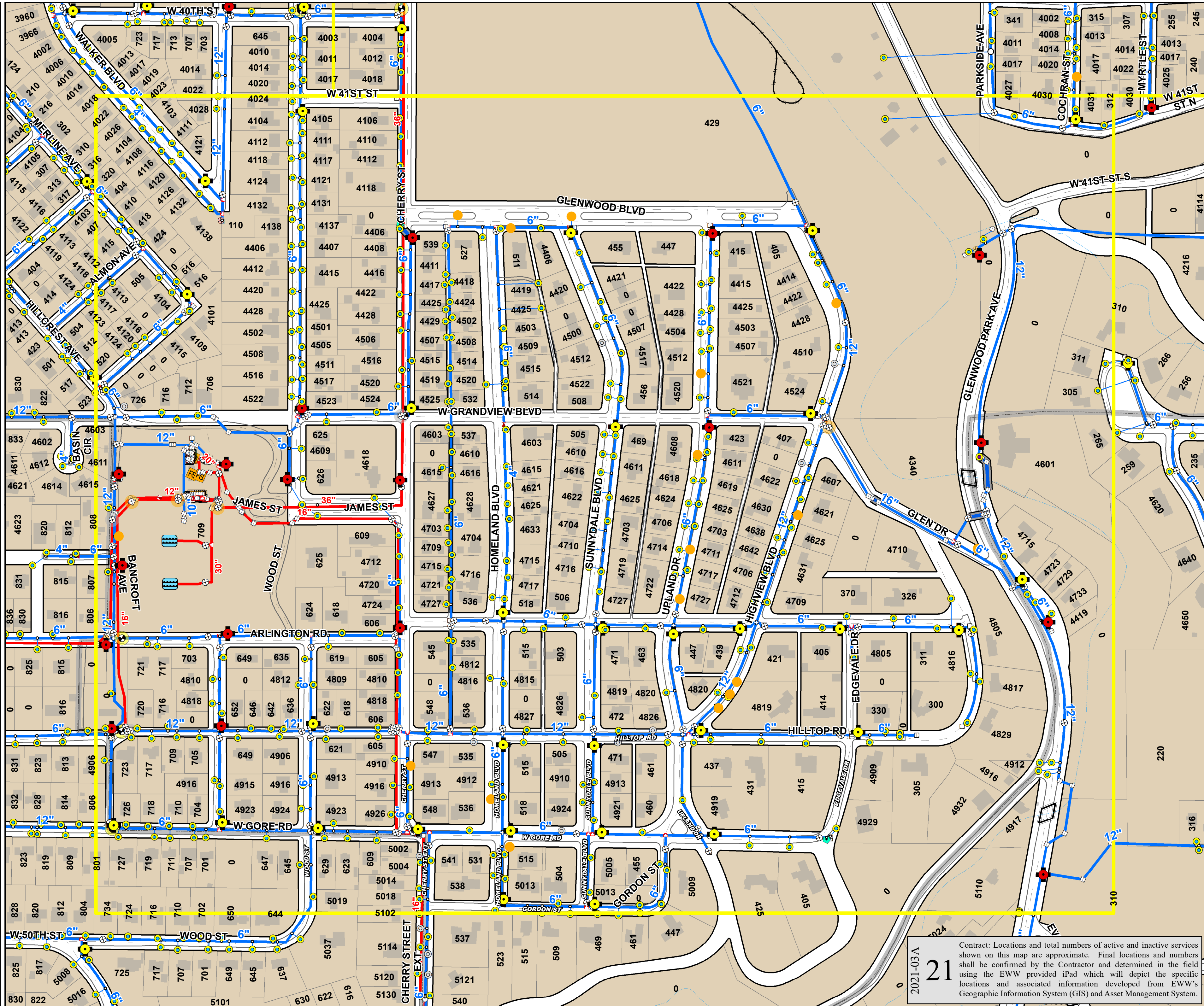
20

Contract: Locations and total numbers of active and inactive services shown on this map are approximate. Final locations and numbers shall be confirmed by the Contractor and determined in the field using the EWW provided iPad which will depict the specific locations and associated information developed from EWW's Geographic Information System (GIS) and Asset Management System.

2021-03

- Inactive Wrought Iron Services
- Domestic Curb Valve
- Fireline Curb Valve
- Combined Curb Valve
- Inactive Curb Valve
- Hydrant with Branch Valve
- Hydrant no Branch Valve
- Open Gate Valve
- Closed Gate Valve
- Open Butterfly Valve
- Closed Butterfly Valve
- Hydrant Valve
- Fitting
- Cross
- Tee
- Inverter/Reducer
- Corporation Stop
- Smith Tap
- Water Quality Device
- Critical Customer
- Project Area Grid
- Domestic Service Line
- Fire Service Line
- Combined Service Line
- Inactive Service Line
- Hydrant Branch
- Distribution Main
- Transmission Main
- Water Main Casing
- Political Boundary
- Building Footprint
- Right of Way
- Edge of Pavement

Printing Date: June 28th, 2023
 File: Engineering/CIP Projects/6- Capital
 Projects 2017-2021-03 PENNVEST
 WIFA Lead Line Replacement Project
 Maps, GIS data, & Construction Estimate



Contract: Locations and total numbers of active and inactive services shown on this map are approximate. Final locations and numbers shall be confirmed by the Contractor and determined in the field using the EWW provided iPad which will depict the specific locations and associated information developed from EWW's Geographic Information System (GIS) and Asset Management System.

2021-03A **21**