

Replaceable Battery ①

Antenna ②

Light Sensor ③

Flow Indicators ④

Date of Manufacture ⑤

LCD Display ⑥

T-10 Meter ⑦

E-Coder R900i™**LIGHT SENSOR**

Recessed under the small hole near the center of the faceplate of the E-Coder)R900i; supplies the power for the LCD panel (light activated).

**FLOW INDICATOR**

Shows the direction of flow through the meter:

ON	Water in use.
OFF	Water not in use.
FLASHING	Water is running slowly.
(-)	Reverse flow.
(+)	Forward flow.

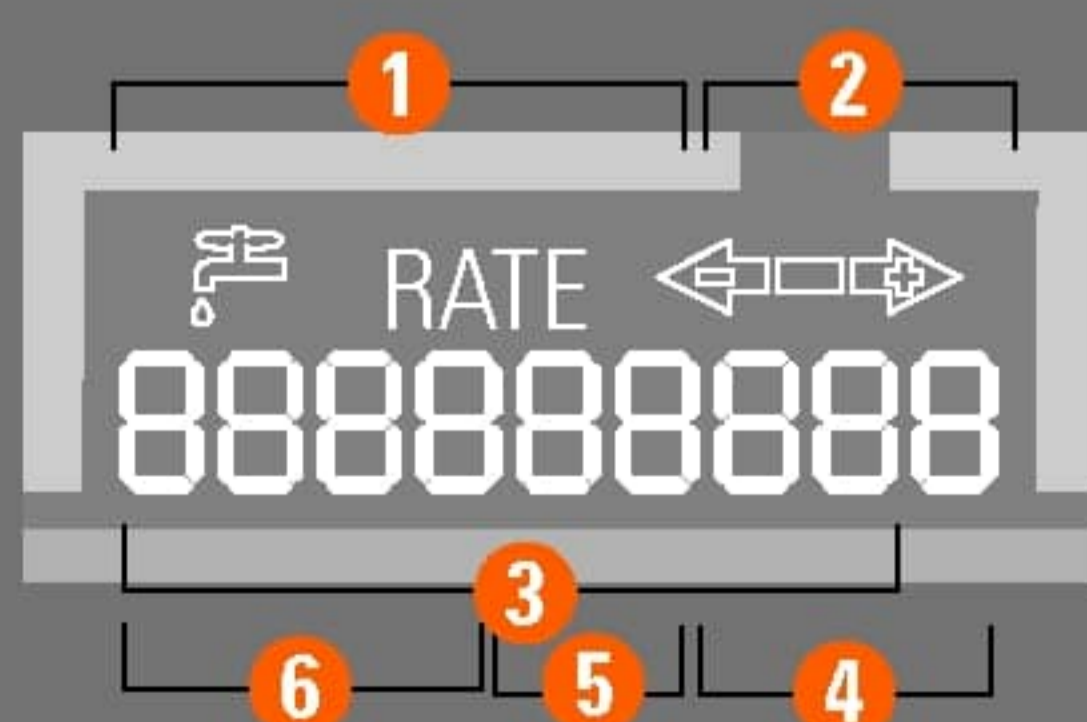
**LEAK INDICATOR**

Displays a possible leak:

OFF	No leak indicated.
FLASHING	Intermittent leak indicates that water has been used for at least 50 of the 96 15-minute intervals during a 24-hour period.
ON CONTINUOUSLY	Indicates water use for all 96 15-minute intervals during a 24-hour period.

RATE**RATE OF FLOW**

Average flow rate is displayed every six seconds on LCD display.

**LCD DISPLAY**

Nine-digit LCD displays the meter reading in billing units of measure: U.S. gallons, cubic feet, Imperial gallons, or cubic metres.

- ① E-Coder® Basic Reading/Customary 6-digit remote reading
- ② Customary sweep hand digits
- ③ E-Coder PLUS Reading (8-digit remote reading)
- ④ Testing units used for diagnostics
- ⑤ Extended reading units
- ⑥ Customary billing units