



NEWSPLASH

News for Customers of the Erie Water Works

Fourth Quarter 2020

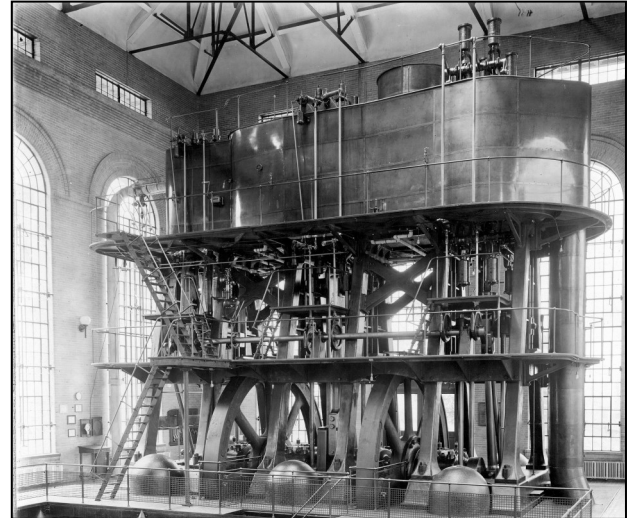
Meet "Big Bertha"

The rapid population growth in the City of Erie in the late 1800's quickly revealed the water system was inadequate. During this time through 1908 water was being drawn directly from Presque Isle Bay without the benefit of treatment. By 1910, 1,060 cases of typhoid fever were reported resulting in 135 deaths. The need for proper pumping and treatment was apparent. As a result, construction began on the Chestnut Street Pumping Station.

The sixth pump of its kind built by the Bethlehem Steel Company of Bethlehem, PA "Big Bertha" was installed in 1913 and was the main pumping source for the water department. The triple expansion steam reciprocating engine is typical of those used in municipal water pumping stations throughout the country during the late 19th and early 20th centuries. It was taken out of service in 1950 and replaced by three 18 million gallons per day (MGD) low service electric motor driven pumps.

Big Bertha is still housed in the Chestnut Street Pumping Station on the south side of the Bayfront Parkway.

In April 1981, The American Society of Mechanical Engineers designated "Big Bertha" an engineering historical landmark.



"Old No. 6"

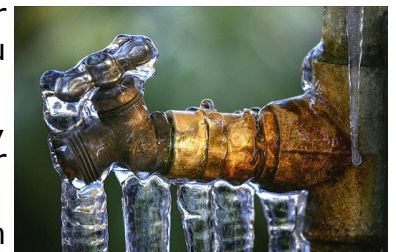
- Vertical reciprocation
- Triple Expansion Condensing
- Crank and Flywheel (2)
- Piston Diameters - 33", 66", 98"
- Piston Stroke - 5.5 feet
- Flywheel Diameter - 20 feet
- Flywheel Speed - 25 RPM
- Developed Horsepower - 600
- Pump Capacity - 20 MGD

It's Time to Prepare Your Home for Winter

When temperatures are consistently at or below 32°F, pipes in your home may be vulnerable to freezing. Here are some tips to help you deal with Erie's frigid weather.

- Eliminate sources of cold air near water lines by repairing windows, insulating walls, closing off crawl spaces and eliminating drafts near doors.
- Allow a small trickle of water to run overnight to keep pipes from freezing. The cost of the extra water is minimal compared to the cost to repair a broken pipe.
- Open cabinet doors to expose pipes to warmer room temperatures to help keep them from freezing.
- If your pipes freeze apply heat to the frozen pipe by warming the air around it. You can use a hair dryer, space heater or hot water to thaw the pipe and allow water to flow freely.

If water is not restored and neighbors are experiencing the same problem it could be a water main break and customers should call the Erie Water Works 24-hour emergency number 814-870-8087.



The Erie Water Works 2019 Water Quality Report is available on our website. Visit "www.eriewater.org/wqr/2019wqr.erie.pdf" To receive a paper copy please call 814-870-8000 ext. 299.

Before You Dig...



Know what's below.
Call before you dig.

Call 811 at least three days before you start any digging project. Whether you are planning to do it yourself or hire a professional, smart and safe digging means calling 811 before each job. This allows for underground utilities to be physically located so as to avoid damage to life and property.

GO PAPERLESS!
Pay-by-Text
Register your account at
www.eriewater.org



We love dogs as much as you do, but even the friendliest dog can become aggressive when protecting their owners and their home.

**BEWARE
of DOG**

Whether you're receiving scheduled service or we're on your property for a meter reading, please help minimize dangerous situations.

Make sure your dog is securely confined where it cannot come into contact with our employee. Post a "Beware of Dog" sign on your fence or house to avoid any surprises. Pay attention to your dog's body language. If you believe your dog is going to attack, try to place something between the dog and the EWW employee.

Our employees have been trained to approach every property as if there is an aggressive dog present but it's always helpful to know ahead of time if danger is imminent.

A huge thank you to the EWW customers that take into consideration the many challenges utility workers are faced with each and every day.



Pictured above is an EWW employee participating in Occupational Dog Bite Prevention Training.

Pay online at www.eriewater.org or
by phone at 1-855-907-3211

Service Interruption

The Erie Water Works makes every effort to provide its customers with continuous water service. However, water service must sometimes be interrupted or water pressure reduced, to allow for emergency leak repairs, preventative maintenance activities and water main installations.

We apologize for any inconvenience caused by our scheduled and unplanned service interruptions. Occasionally when water is restored following an interruption in service, some customers experience cloudy water. Cloudy water is not harmful, but should this occur we encourage you to run cold water in a utility sink or bathtub until the water runs clear.



"World-Class Water, First-Class Service"