

PLEASE COMPLETE AND RETURN TO:  
 ERIE WATER WORKS ENGINEERING DEPARTMENT  
 240 WEST 12TH STREET, ERIE, PA 16501  
 PH: (814) 870-8000 EXT 207, FAX: (814) 870-8011  
 backflowprevention@eriewaterworks.org

RESIDENTIAL / NON-RESIDENTIAL (circle)  
 NAME: \_\_\_\_\_  
 SERVICE ADDRESS: \_\_\_\_\_  
 PLUMBER NAME: \_\_\_\_\_  
 DATE SUBMITTED: \_\_\_\_\_

BACKFLOW PREVENTER (BFP): \_\_\_\_\_  
 TYPE: (circle) RPBA, RPDA, DCVA, OR DCDA  
 MAKE: \_\_\_\_\_ MODEL: \_\_\_\_\_ SIZE: \_\_\_\_\_  
 HEATED ENCLOSURE: \_\_\_\_\_  
 MAKE: \_\_\_\_\_ MODEL: \_\_\_\_\_ SIZE: \_\_\_\_\_  
 CUSTOM BUILT: \_\_\_\_\_  
 ASSE 1060 COMPLIANT: (circle) Y / N  
 CUSTOM BUILT ENCLOSURES MUST  
 BE SUBMITTED FOR REVIEW

APPROVED BY: \_\_\_\_\_  
 DATE APPROVED: \_\_\_\_\_  
 APPROVAL RETURNED: \_\_\_\_\_

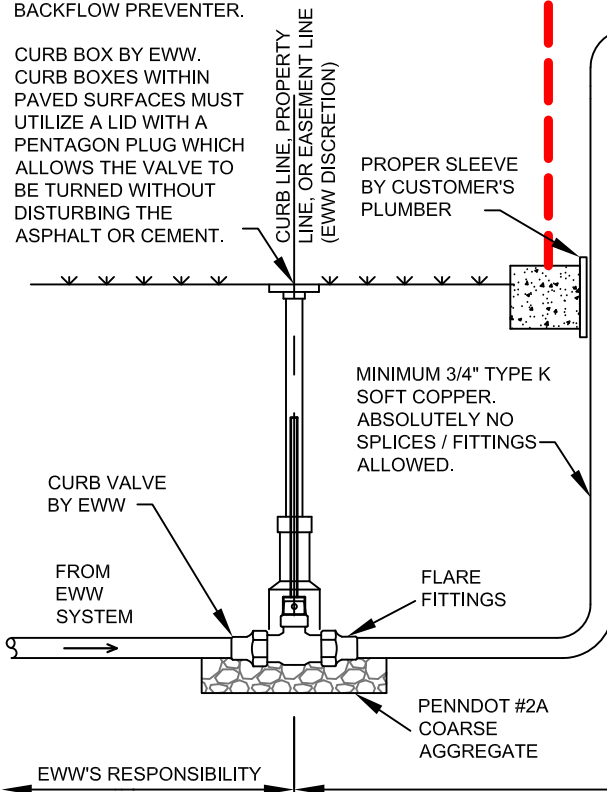
THIS DETAIL EWW-SD-005 IS FOR DOMESTIC WATER SERVICES WHERE A TESTABLE BACKFLOW PREVENTER IS REQUIRED AND WHERE A CONTINUOUS ROLL OF COPPER FROM CURB BOX TO INSIDE WALL OF THE HOUSE OR STRUCTURE CAN NOT BE INSTALLED.

ALL PIPING SHALL BE TYPE K SOFT COPPER FROM THE WATER MAIN TO THE CUSTOMER'S STOP & WASTE VALVE, WHICH MUST BE CONNECTED TO THE TYPE K COPPER USING A SOLDER, FLARE, OR PROPPRESS FITTING. COMPRESSION FITTINGS ARE NOT PERMISSIBLE. ONLY COPPER AND/OR BRASS PIPE AND FITTINGS CAN BE UTILIZED TO THE BACKFLOW PREVENTER.

CURB BOX BY EWW. CURB BOXES WITHIN PAVED SURFACES MUST UTILIZE A LID WITH A PENTAGON PLUG WHICH ALLOWS THE VALVE TO BE TURNED WITHOUT DISTURBING THE ASPHALT OR CEMENT.

PROPER SLEEVE BY CUSTOMER'S PLUMBER

MINIMUM 3/4" TYPE K SOFT COPPER. ABSOLUTELY NO SPLICES / FITTINGS ALLOWED.

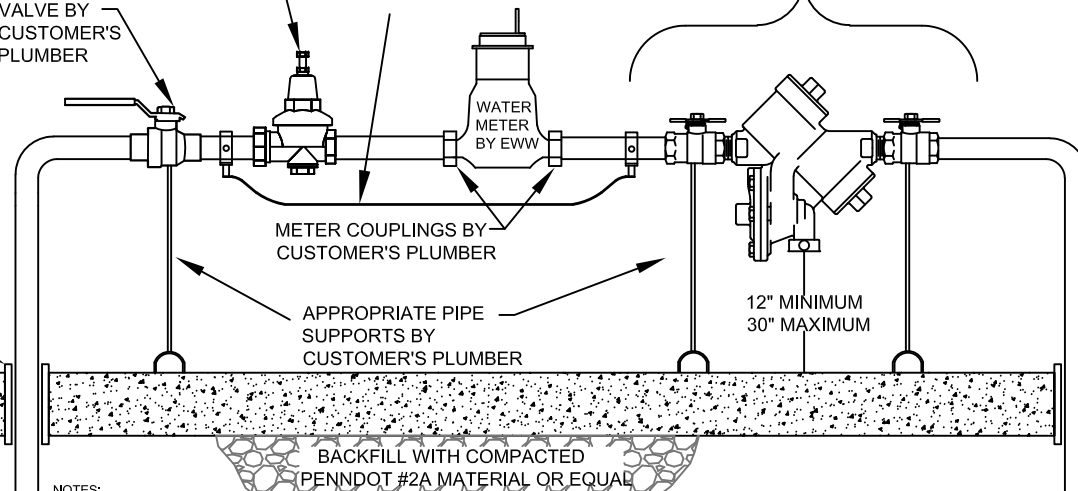


PRESSURE REDUCING VALVE BY CUSTOMER'S PLUMBER. CONTACT THE EWW ENGINEERING DEPARTMENT TO DETERMINE IF NECESSARY.

REQUIRED STOP & WASTE VALVE BY CUSTOMER'S PLUMBER

REQUIRED GROUND STRAP

BACKFLOW PREVENTER ASSEMBLY BY CUSTOMER'S PLUMBER (SUBMIT INFO TO EWW ENGINEERING FOR APPROVAL PRIOR TO INSTALL). IF RPBA OR RPDA, PROPER DRAINAGE AND AIR GAP IS REQUIRED.



NOTES:

1. METER REQUIRES STRAIGHT PIPE LENGTHS A MINIMUM OF 4 PIPE DIAMETERS IMMEDIATELY UPSTREAM OF THE METER AND A MINIMUM OF 4 PIPE DIAMETERS DOWNSTREAM OF THE METER AND BEFORE ANY OTHER APPURTENANCES.
2. SCHEDULE AN INSPECTION WITH THE EWW ENGINEERING DEPARTMENT AT LEAST 24 HOURS PRIOR TO INSTALLING / BACKFILLING SERVICE LINE AND BACKFLOW ASSEMBLY.
3. ALL EWW SPECIFICATIONS MUST BE MET BEFORE WATER SERVICE IS INITIATED.
4. THERMAL EXPANSION SHALL BE ADDRESSED BY CUSTOMERS PLUMBER. CHECK LOCAL PLUMBING CODES FOR REQUIREMENTS.
5. FOR DOMESTIC SERVICES 4" AND LARGER, OR ANY PROPOSED SERVICE DIFFERENT THAN ILLUSTRATED HERE, AN ENGINEERED PLAN MUST BE SUBMITTED TO THE EWW ENGINEERING DEPARTMENT FOR APPROVAL.
6. ALL PIPES, FITTINGS, AND FIXTURES IN CONTACT WITH POTABLE WATER SHALL BE LEAD FREE PER THE REDUCTION OF LEAD IN DRINKING WATER ACT AND NSF/ANSI STANDARD 61 (NSF-61). LEAD FREE IS DEFINED AS CONTAINING NOT MORE THAN A WEIGHTED AVERAGE OF 0.25 PERCENT LEAD WHEN USED WITH RESPECT TO THE WETTED SURFACES OF PIPES, PIPE FITTINGS, PLUMBING FITTINGS, AND FIXTURES.
7. ALL MATERIALS FURNISHED AND INSTALLED MUST COMPLY WITH THE PENNSYLVANIA STEEL PRODUCTS PROCUREMENT ACT.
8. ENSURE 12" MINIMUM CLEARANCE ON ALL SIDES FROM WALLS/ENCLOSURES FOR BACKFLOW APPURTENANCES TO ALLOW MAINTENANCE/REPAIR ACCESS.
9. ANY MODIFICATION MUST BE APPROVED BY THE EWW ENGINEERING DEPARTMENT IN ADVANCE.

DRAWN BY: CE APPROVED BY: CP  
 DATE: AUG 2018 EWW - SD - 005

**DOMESTIC SERVICE (3/4" - 2") WITH BFP (ENCLOSURE)**

ERIE WATER WORKS  
 240 West 12th Street  
 Erie, PA 16501  
 engineering@eriewaterworks.org

