

1/4" STEEL CASING PIPE ASTM 53

3' MAX OR AS DIRECTED BY CARRIER MANUFACTURER TO SUPPORT CARRIER PIPE MATERIAL

DOUBLE SPACER AT EACH END OF CASING PIPE

RESTRAIN A MINIMUM OF 3 JOINTS BEYOND EACH END OF CASING PIPE UTILIZING LOCK TYPE GASKETS (U.S. PIPE FIELD LOCK GASKETS OR APPROVED EQUAL).

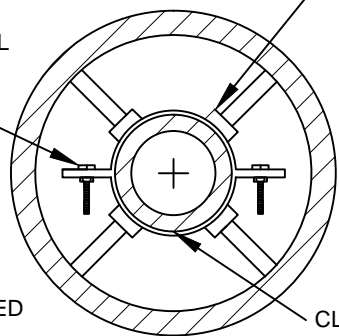
RUBBER BOOT

RESTRAIN ALL JOINTS WITHIN CASING PIPE UTILIZING LOCK TYPE GASKETS (U.S. PIPE FIELD LOCK GASKETS OR APPROVED EQUAL).

STAINLESS STEEL BANDS

CASING SPACERS - MUST PROVIDE ELECTRICAL TRANSMISSION INSULATION BETWEEN CASING PIPE AND WATER MAIN

304 STAINLESS STEEL STUD WASHERS AND HEX NUTS



CASING PIPE SIZE  
 20" WATER MAIN - 36" CASING  
 16" WATER MAIN - 30" CASING  
 12" WATER MAIN - 24" CASING  
 8" WATER MAIN - 16" CASING  
 6" WATER MAIN - 12" CASING  
 4" WATER MAIN - 10" CASING

CLASS 52 DUCTILE IRON WATER MAIN (DOUBLE CEMENT LINED WITH ASPHALTIC COATING) IN POLYETHYLENE ENCASEMENT

NOTES:

1. AFTER ASSEMBLY ALL BOLTS, NUTS, AND WASHERS EXPOSED TO DIRECT BURY CONDITIONS SHALL BE COATED WITH COAL TAR (BITUMASTIC 50 AS MANUFACTURED BY CARBOLINE OR APPROVED EQUAL).
2. ANY MODIFICATION MUST BE APPROVED BY THE EWW ENGINEERING DEPARTMENT IN ADVANCE.

DRAWN BY: PH	APPROVED BY: CP
DATE: OCT 2010	NOT TO SCALE

STEEL CASING AND D.I. WATER MAIN (BORE)

ERIE WATER WORKS  
 240 West 12th Street  
 Erie, PA 16501

