

BLOW OFF SAMPLE STATION, SAFETY-GUARD 2" SAMPLE STATION MODEL # SGBSS-19 UNIT SHALL HAVE A 6 FOOT BURY DEPTH AND MUST BE SELF DRAINING.

NOTES:

1. TAPS MADE TO THE POLYETHYLENE ENCASED PIPE MUST BE MADE IN STRICT CONFORMANCE TO THE MANUFACTURERS INSTALLATION REQUIREMENTS. ENCASMENT INTEGRITY MUST NOT BE BREACHED.

2. ANY MODIFICATION MUST BE APPROVED BY THE EWW ENGINEERING DEPARTMENT IN ADVANCE.

TWO-PIECE CAST IRON SCREW TYPE 6850 SERIES VALVE BOX WITH 5 1/4" DROP LID. LID SHALL HAVE THE WORD "WATER" FORGED INTO CASTING. ALL VALVE BOXES MUST BE PRODUCED IN ACCORDANCE WITH AND MEET PROVISIONS OF MOST RECENT ASTM A-438, ASTM-A48, AWWA C110/A21, AND AWWA C110/A21 4-90 STANDARDS. TYLER MODEL (562-S, 564-S, OR 664-S) BOX OR EQUAL.

CORPORATION STOP (BALL VALVE), MUELLER MODEL # B-25000 OR APPROVED EQUAL. SHALL BE DIRECT TAPPED INTO THE MAIN WITH A MINIMUM OF 2 THREADS. A MJ TAPPED TEE, TYLER UNION MODEL # C110 OR APPROVED EQUAL, MAY BE USED IF MAIN THICKNESS DOES NOT ALLOW FOR 2 THREADS. SERVICE SADDLES ARE NOT TO BE USED.

CLASS 52 DUCTILE IRON WATER MAIN (DOUBLE CEMENT LINED WITH ASPHALTIC COATING) IN POLYETHYLENE ENCASEMENT

TAP SHALL BE SUPPORTED TO EDGE OF TRENCH WITH #2A MODIFIED BACKFILL.

2" TYPE "K" SOFT COPPER. ABSOLUTELY NO SPLICES / FITTINGS ALLOWED.

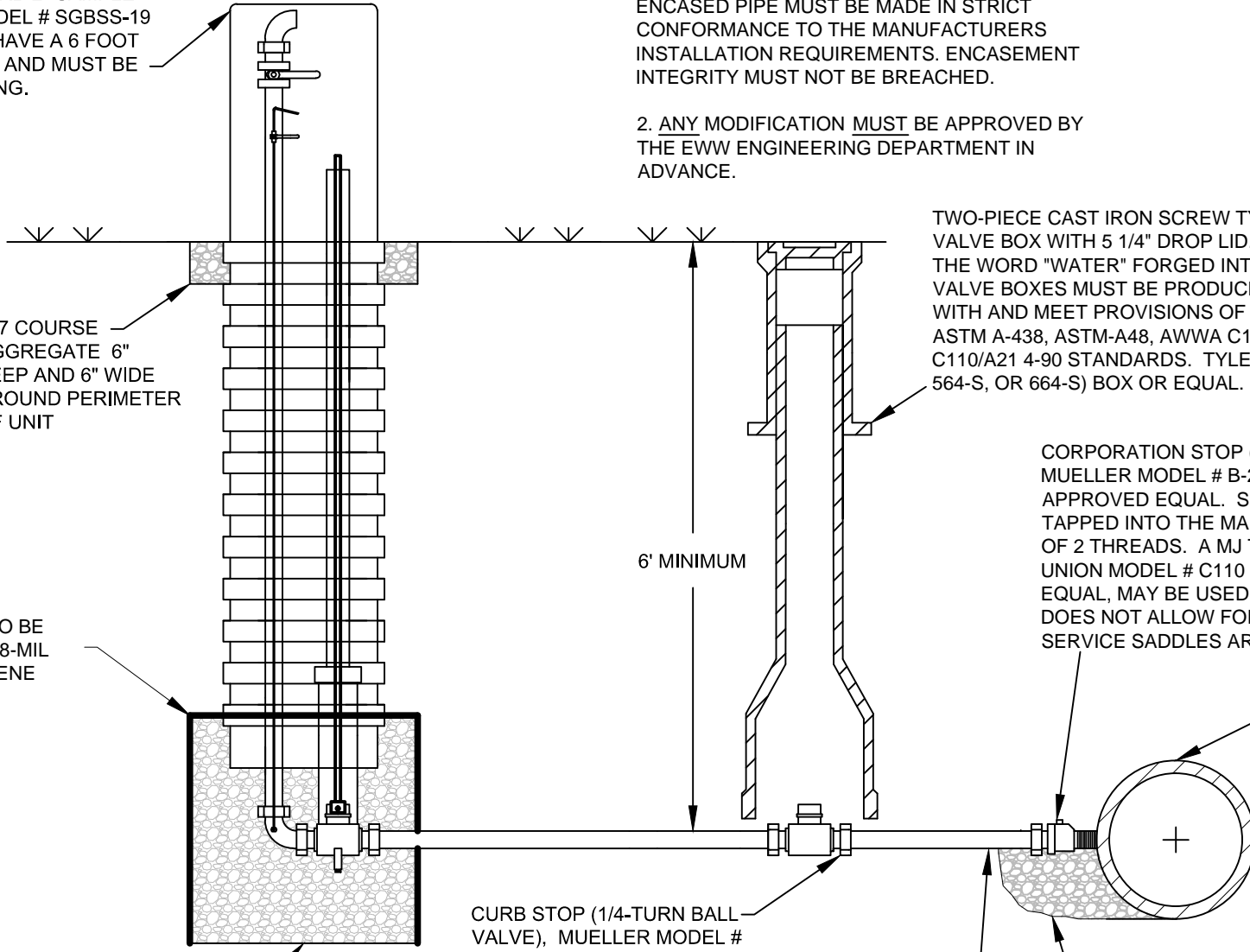
CURB STOP (1/4-TURN BALL VALVE), MUELLER MODEL # B-25204 OR APPROVED EQUAL.

6' MINIMUM

#57 COURSE AGGREGATE 6" DEEP AND 6" WIDE AROUND PERIMETER OF UNIT

DRY WELL TO BE LINED WITH 8-MIL POLYETHYLENE

#57 COURSE AGGREGATE MINIMUM 1 / 3 CUBIC YARD



DRAWN BY: PH	APPROVED BY: CP
DATE: OCT 2010	NOT TO SCALE

2" BLOW OFF SAMPLING STATION

ERIE WATER WORKS
240 West 12th Street
Erie, PA 16501

