

RESIDENTIAL / NON-RESIDENTIAL (circle)  
 NAME: \_\_\_\_\_  
 SERVICE ADDRESS: \_\_\_\_\_  
 \_\_\_\_\_  
 PLUMBER NAME: \_\_\_\_\_  
 DATE SUBMITTED: \_\_\_\_\_

BACKFLOW PREVENTER (BFP): \_\_\_\_\_  
 TYPE: (circle) RPDA OR DCDA  
 MAKE: \_\_\_\_\_  
 MODEL: \_\_\_\_\_  
 SIZE: \_\_\_\_\_

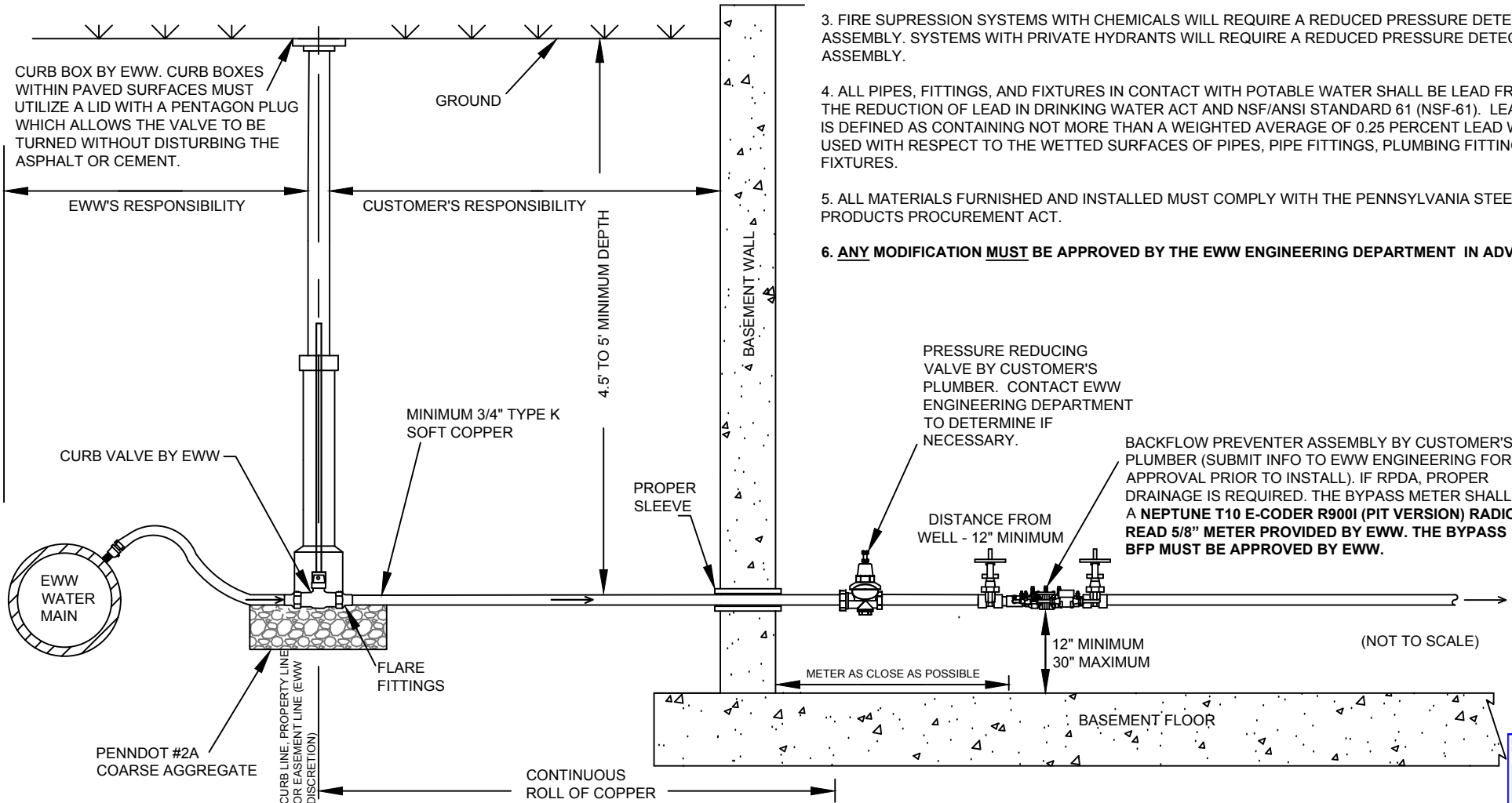
APPROVED BY: \_\_\_\_\_  
 DATE APPROVED: \_\_\_\_\_  
 APPROVAL RETURNED: \_\_\_\_\_

PLEASE COMPLETE AND RETURN TO:  
 ERIE WATER WORKS ENGINEERING DEPARTMENT  
 240 WEST 12TH STREET, ERIE, PA 16501  
 PH: (814) 870-8000 EXT 207, FAX: (814) 870-8011  
 backflowprevention@eriewaterworks.org

THIS DETAIL EWW-SD-006 IS FOR A FIRELINE WHERE A CONTINUOUS ROLL OF COPPER FROM CURB-BOX TO INSIDE WALL OF THE HOUSE OR STRUCTURE CAN BE INSTALLED. ABSOLUTELY NO FITTINGS / SPLICES ARE ALLOWED. A HEATED ENCLOSURE OR VAULT WILL BE NECESSARY IF THE SERVICE REQUIRES MORE THAN ONE CONTINUOUS ROLL OF COPPER.

NOTES:

- SCHEDULE AN INSPECTION WITH THE EWW ENGINEERING DEPARTMENT AT LEAST 24 HOURS PRIOR TO INSTALLING AND BACKFILLING SERVICE LINE AND BACKFLOW ASSEMBLY.
- ALL EWW SPECIFICATIONS MUST BE MET BEFORE WATER SERVICE IS INITIATED.
- FIRE SUPPRESSION SYSTEMS WITH CHEMICALS WILL REQUIRE A REDUCED PRESSURE DETECTOR ASSEMBLY. SYSTEMS WITH PRIVATE HYDRANTS WILL REQUIRE A REDUCED PRESSURE DETECTOR ASSEMBLY.
- ALL PIPES, FITTINGS, AND FIXTURES IN CONTACT WITH POTABLE WATER SHALL BE LEAD FREE PER THE REDUCTION OF LEAD IN DRINKING WATER ACT AND NSF/ANSI STANDARD 61 (NSF-61). LEAD FREE IS DEFINED AS CONTAINING NOT MORE THAN A WEIGHTED AVERAGE OF 0.25 PERCENT LEAD WHEN USED WITH RESPECT TO THE WETTED SURFACES OF PIPES, PIPE FITTINGS, PLUMBING FITTINGS, AND FIXTURES.
- ALL MATERIALS FURNISHED AND INSTALLED MUST COMPLY WITH THE PENNSYLVANIA STEEL PRODUCTS PROCUREMENT ACT.
- ANY MODIFICATION MUST BE APPROVED BY THE EWW ENGINEERING DEPARTMENT IN ADVANCE.**



DRAWN BY: SB  
 DATE: FEB 2018  
 APPROVED BY: CP  
 EWW - SD - 006

**FIRELINE 2" AND SMALLER (CONTINUOUS ROLL OF COPPER)**

**ERIE WATER WORKS**  
 240 West 12th Street  
 Erie, PA 16501  
 engineering@eriewaterworks.org

